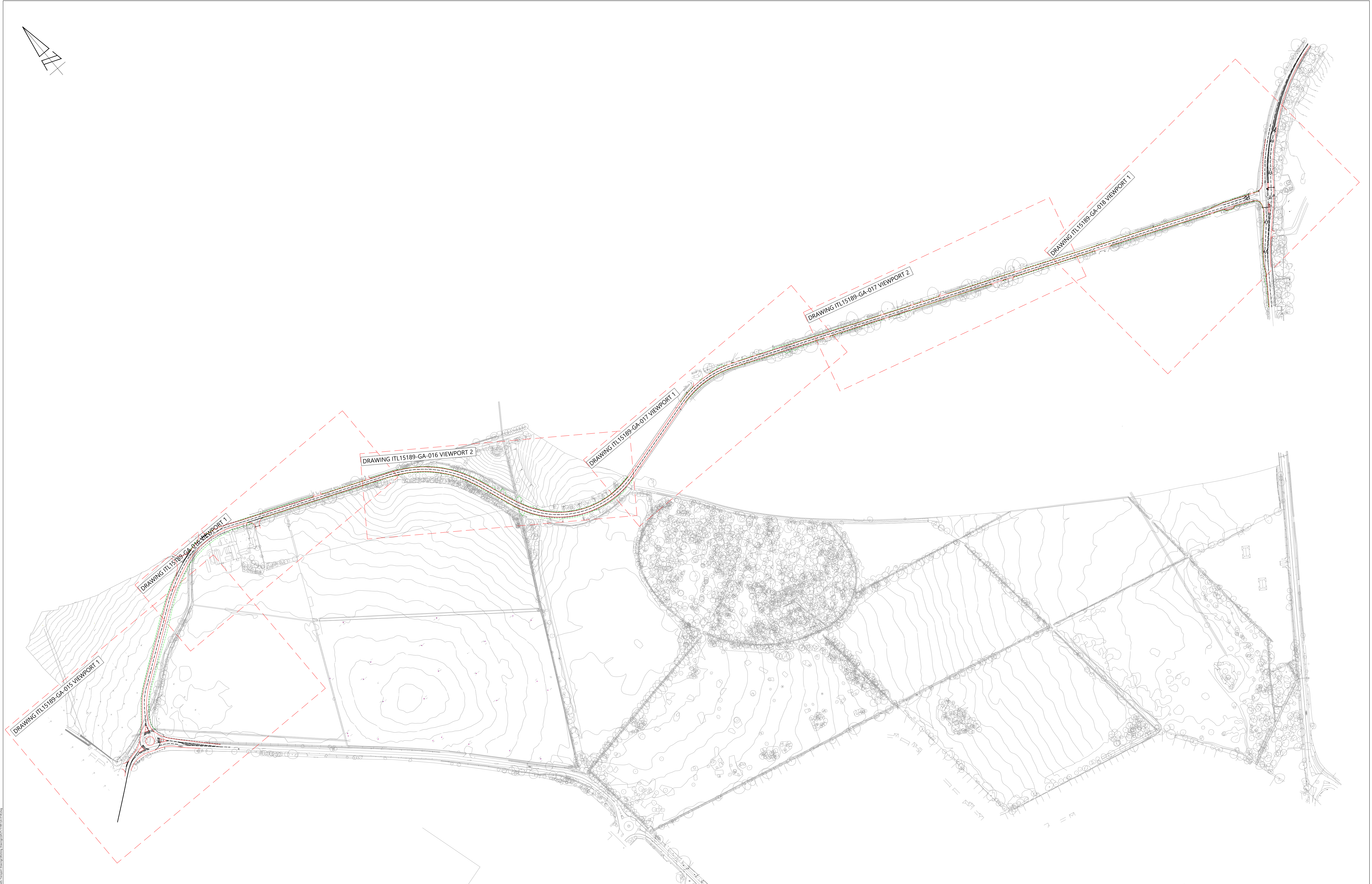


APPENDIX D: The Sevenhills Road Highway Mitigation Scheme

- ITL 15189-GA-014 revision E
- ITL 15189-GA-015 revision E
- ITL 15189-GA-016 revision E
- ITL 15189-GA-017 revision E
- ITL 15189-GA-018 revision E

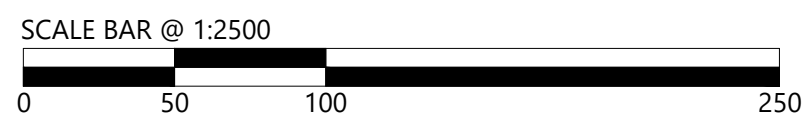


Pinewood Studios - Seven Hills Upgrade - Highway Design - Design Stage - Drawing ITL15189-GA-014



85 Gresham Street, London, EC2V 7NQ Tel: 020 3705 9215

www.i-transport.co.uk



REPRODUCED FROM THE ORDNANCE SURVEY
MAP WITH THE PERMISSION OF THE
CONTROLLER OF HER MAJESTY'S STATIONERY
OFFICE. LICENCE No. 10004286.
© CROWN COPYRIGHT RESERVED.

DRAWING ISSUED FOR FEASIBILITY CONSIDERATION AND PLANNING PURPOSES ONLY.
DRAWING NOT TO BE USED FOR CONSTRUCTION. I-TRANSPORT LLP ACCEPT NO RESPONSIBILITY
FOR ERRORS MADE BY OTHERS IN SCALED FROM THIS DRAWING. MEASUREMENTS SHOULD BE
TAKEN FROM FIGURED DIMENSIONS ONLY. CDM REQUIREMENTS CONSIDERED AT FEASIBILITY
STAGE ONLY. FURTHER CONSIDERATION REQUIRED BY DETAILED DESIGN TEAM.

REV	DATE	BY	DESCRIPTION
E	27.03.20	MC	HIGHWAY ALIGNMENT REVISED
D	10.01.20	MC	HIGHWAY ALIGNMENT REVISED
C	03.12.19	MC	HIGHWAY ALIGNMENT REVISED
B	27.11.19	MC	HIGHWAY ALIGNMENT REVISED
A	15.11.19	MC	HIGHWAY ALIGNMENT REVISED

STATUS

FOR INFORMATION

CHK	APP
MC	JCB
MC	JCB
MC	JCB
MC	JCB
MC	JCB

PROJECT

PINEWOOD STUDIOS - SEVEN HILLS UPGRADE

TITLE

HIGHWAY ALIGNMENT ALONG SEVEN HILLS ROAD SHEET 1 OF 5
(PRIVATE & CONFIDENTIAL)

CLIENT

PINEWOOD STUDIOS GROUP

DRAWN

MC

CHECKED

DF

APPROVED

JCB

PROJECT No:

ITL15189

SCALE @ A1:

1:2500

DATE

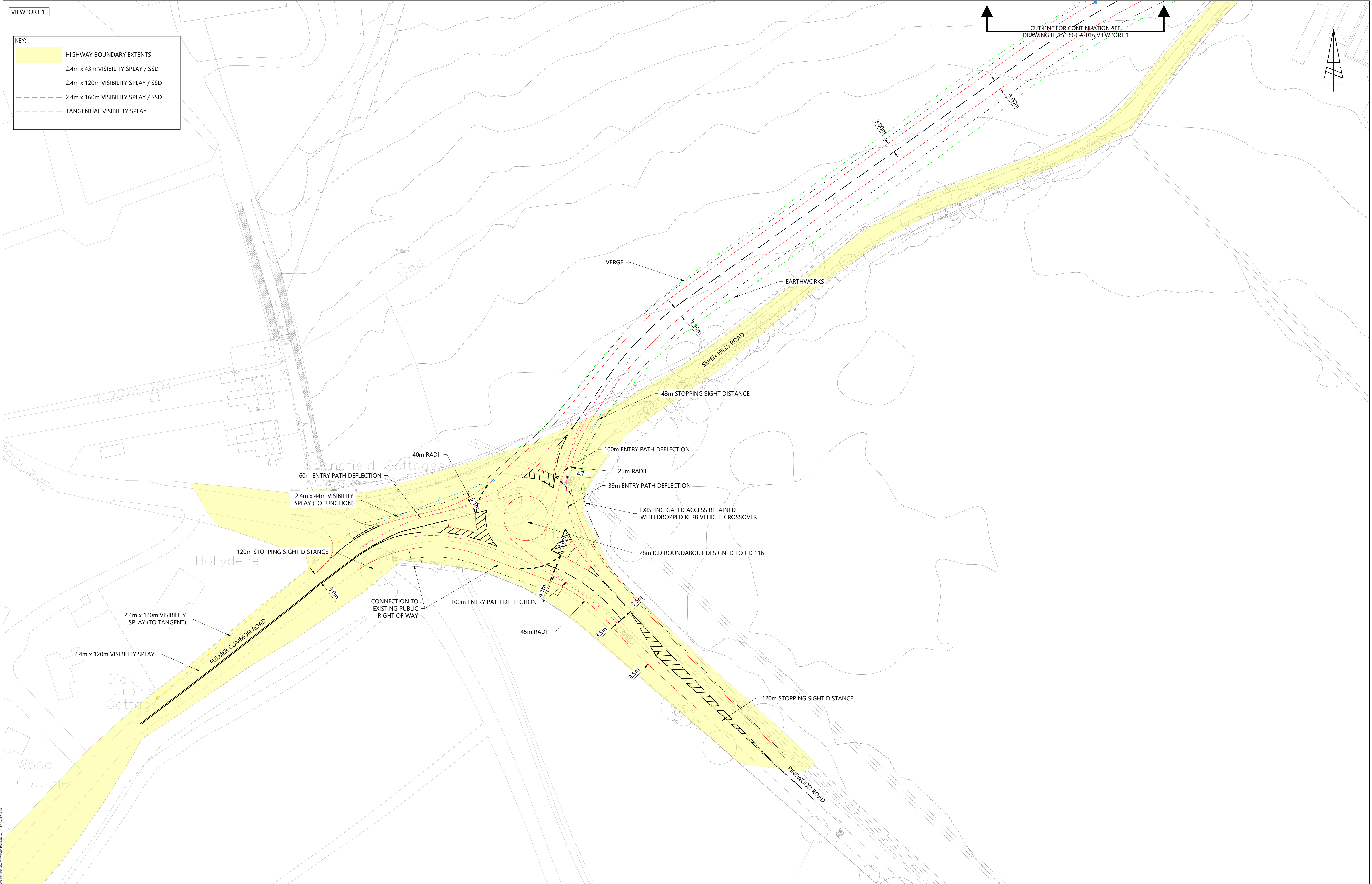
01.11.19

DRAWING No:

ITL15189-GA-014

REV

E



VIEWPORT 1

KEY:

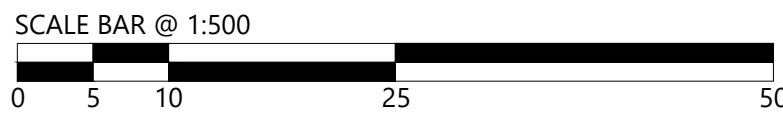
- HIGHWAY BOUNDARY EXTENTS
- 2.4m x 43m VISIBILITY SPLAY / SSD
- 2.4m x 120m VISIBILITY SPLAY / SSD
- 2.4m x 160m VISIBILITY SPLAY / SSD
- TANGENTIAL VISIBILITY SPLAY

Project: ITL15189-GA-016, Drawing: ITL15189-GA-016, Date: 01.11.19, Scale: 1:500, Author: JCB, Checker: JCB, Approver: JCB



85 Gresham Street, London, EC2V 7NQ Tel: 020 3705 9215

www.i-transport.co.uk



REPRODUCED FROM THE ORDINANCE SURVEY MAP WITH THE PERMISSION OF THE CONTROLLER OF HER MAJESTY'S STATIONERY OFFICE. LICENCE No. 100044286. © CROWN COPYRIGHT RESERVED.

DRAWING ISSUED FOR FEASIBILITY CONSIDERATION AND PLANNING PURPOSES ONLY. DRAWING NOT TO BE USED FOR CONSTRUCTION. I-TRANSPORT LLP ACCEPT NO RESPONSIBILITY FOR ERRORS MADE BY OTHERS IN SCALED FROM THIS DRAWING. MEASUREMENTS SHOULD BE TAKEN FROM FIGURED DIMENSIONS ONLY. CDM REQUIREMENTS CONSIDERED AT FEASIBILITY STAGE ONLY. FURTHER CONSIDERATION REQUIRED BY DETAILED DESIGN TEAM.

REV	DATE	BY	DESCRIPTION
E	27.03.20	MC	HIGHWAY ALIGNMENT REVISED
D	10.01.20	MC	HIGHWAY ALIGNMENT REVISED
C	03.12.19	MC	HIGHWAY ALIGNMENT REVISED
B	27.11.19	MC	HIGHWAY ALIGNMENT REVISED
A	15.11.19	MC	HIGHWAY ALIGNMENT REVISED

STATUS

FOR INFORMATION

CHK	APD
MC	JCB
MC	JCB
MC	JCB
MC	JCB

TITLE

HIGHWAY ALIGNMENT ALONG SEVEN HILLS ROAD SHEET 2 OF 5
(PRIVATE & CONFIDENTIAL)

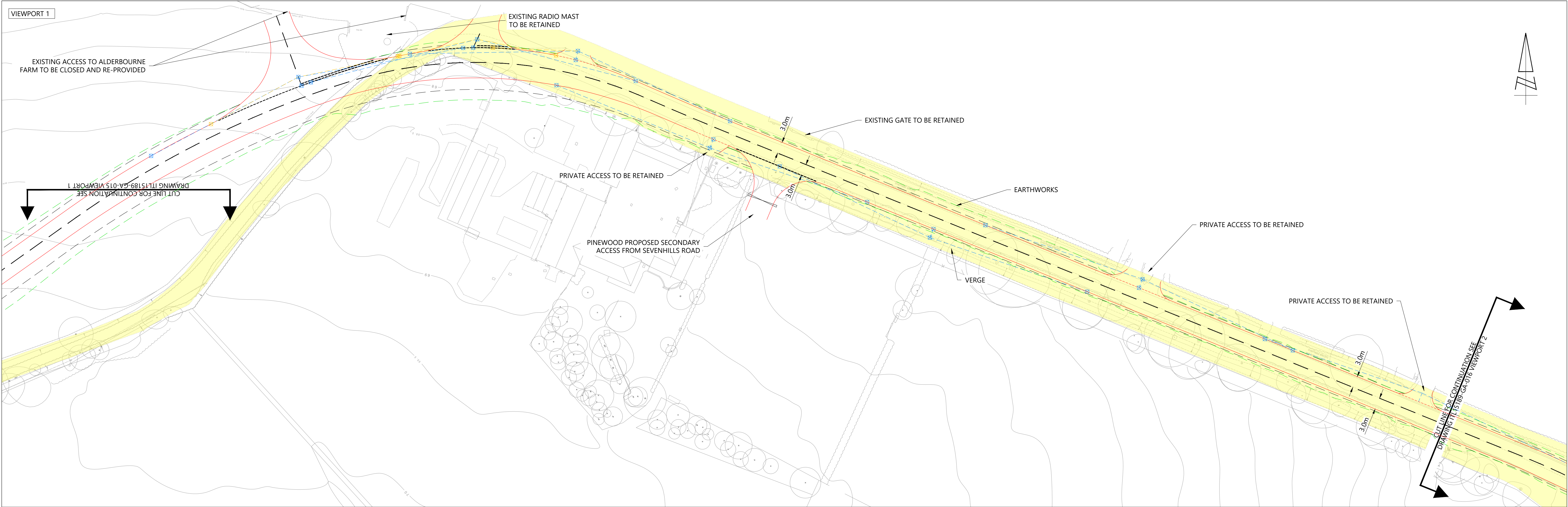
PROJECT

PINEWOOD STUDIOS - SEVEN HILLS UPGRADE

CLIENT

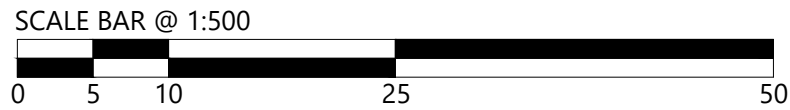
PINEWOOD STUDIOS GROUP

DRAWN	MC	CHECKED	DF	APPROVED	JCB
PROJECT No:	ITL15189	SCALE @ A1:	1:500	DATE:	01.11.19
DRAWING No:	ITL15189-GA-015	REV:	E		



KEY:

	HIGHWAY BOUNDARY EXTENTS
	2.4m x 43m VISIBILITY SPLAY / SSD
	2.4m x 120m VISIBILITY SPLAY / SSD
	2.4m x 160m VISIBILITY SPLAY / SSD
	TANGENTIAL VISIBILITY SPLAY



REPRODUCED FROM THE ORDNANCE SURVEY
MAP WITH THE PERMISSION OF THE
CONTROLLER OF HER MAJESTY'S STATIONERY
OFFICE. LICENCE No. 100044286.
© CROWN COPYRIGHT RESERVED.

DRAWING ISSUED FOR FEASIBILITY CONSIDERATION AND PLANNING PURPOSES ONLY.
DRAWING NOT TO BE USED FOR CONSTRUCTION. I-TRANSPORT LLP ACCEPT NO RESPONSIBILITY
FOR ERRORS MADE BY OTHERS IN SCALING FROM THIS DRAWING. MEASUREMENTS SHOULD BE
TAKEN FROM FIGURED DIMENSIONS ONLY. CDM REQUIREMENTS CONSIDERED AT FEASIBILITY
STAGE ONLY. FURTHER CONSIDERATION REQUIRED BY DETAILED DESIGN TEAM.

E	27.03.20	MC	HIGHWAY ALIGNMENT REVISED	MC	JB	PINEWOOD STUDIOS - SEVEN HILLS UPGRADE	
D	10.01.20	MC	HIGHWAY ALIGNMENT REVISED	MC	JB		
C	03.12.19	MC	HIGHWAY ALIGNMENT REVISED	MC	JB		
B	27.11.19	MC	HIGHWAY ALIGNMENT REVISED	MC	JB		
A	15.11.19	MC	HIGHWAY ALIGNMENT REVISED	MC	JB		
REV	DATE	BY	DESCRIPTION			CHK	APP
STATUS:							
FOR INFORMATION							

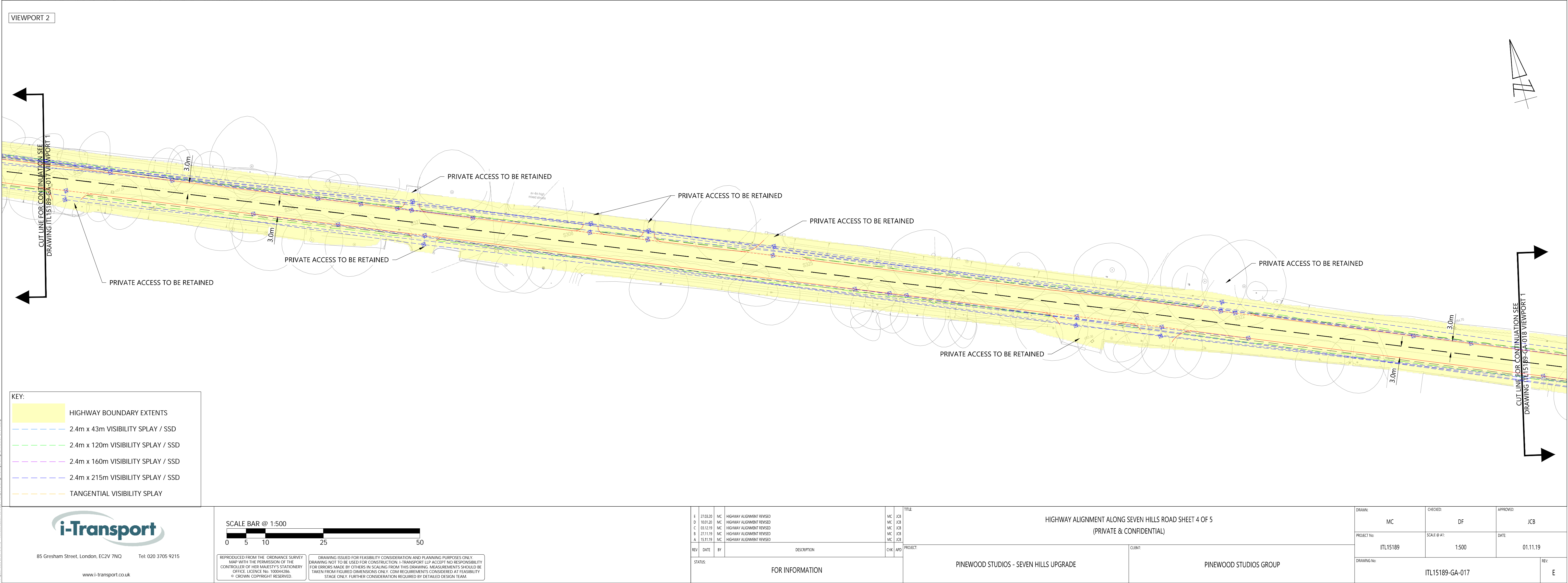
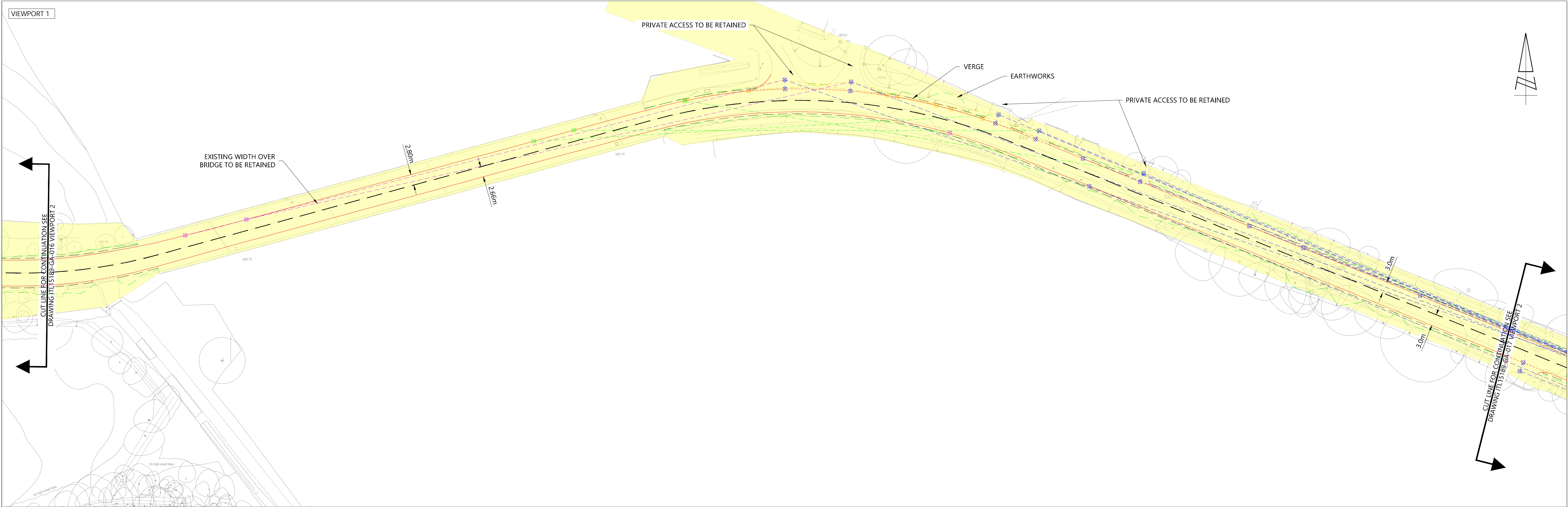
TITLE	CLIENT
HIGHWAY ALIGNMENT ALONG SEVEN HILLS ROAD SHEET 3 OF 5 (PRIVATE & CONFIDENTIAL)	PINEWOOD STUDIOS GROUP

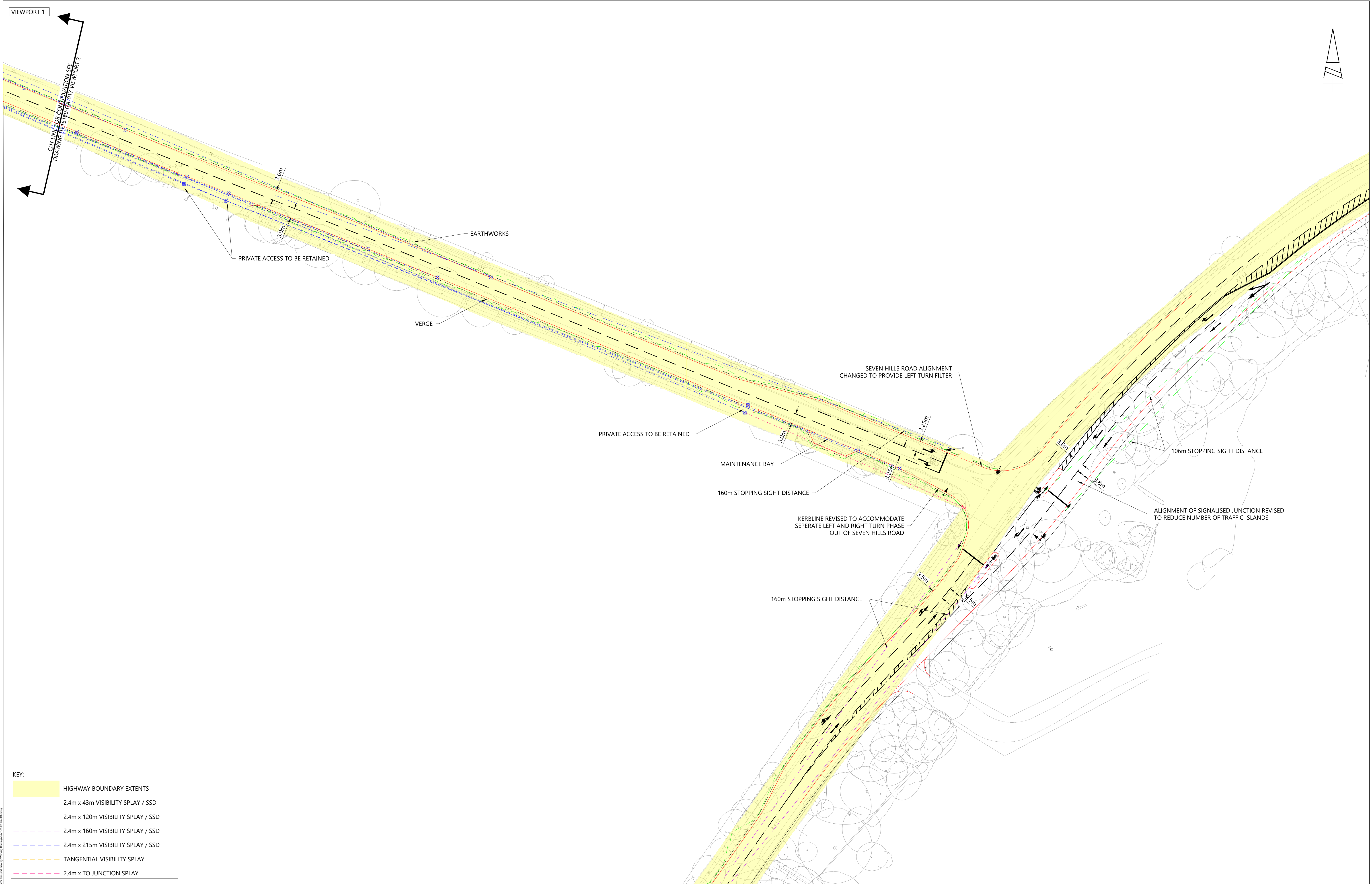
DRAWN: MC	CHECKED: DF	APPROVED: JCB
PROJECT No: ITL15189	SCALE @ A1: 1:500	DATE: 01.11.19
DRAWING No: ITL15189-GA-016	REV: E	



85 Gresham Street, London, EC2V 7NQ Tel: 020 3705 9215

www.i-transport.co.uk

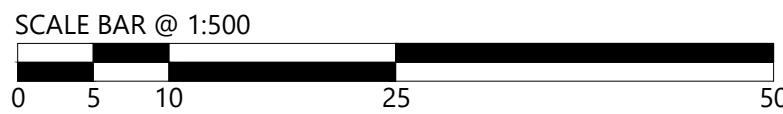




KEY:	
	HIGHWAY BOUNDARY EXTENTS
	2.4m x 43m VISIBILITY SPLAY / SSD
	2.4m x 120m VISIBILITY SPLAY / SSD
	2.4m x 160m VISIBILITY SPLAY / SSD
	2.4m x 215m VISIBILITY SPLAY / SSD
	TANGENTIAL VISIBILITY SPLAY
	2.4m x TO JUNCTION SPLAY



85 Gresham Street, London, EC2V 7NQ Tel: 020 3705 9215
www.i-transport.co.uk



REPRODUCED FROM THE ORDNANCE SURVEY
MAP WITH THE PERMISSION OF THE
CONTROLLER OF HER MAJESTY'S STATIONERY
OFFICE. LICENCE No. 100044286.
© CROWN COPYRIGHT RESERVED.

DRAWING ISSUED FOR FEASIBILITY CONSIDERATION AND PLANNING PURPOSES ONLY.
DRAWING NOT TO BE USED FOR CONSTRUCTION. i-TRANSPORT LLP ACCEPT NO RESPONSIBILITY
FOR ERRORS MADE BY OTHERS IN SCALED FROM THIS DRAWING. MEASUREMENTS SHOULD BE
TAKEN FROM FIGURED DIMENSIONS ONLY. CDM REQUIREMENTS CONSIDERED AT FEASIBILITY
STAGE ONLY. FURTHER CONSIDERATION REQUIRED BY DETAILED DESIGN TEAM.

REV	DATE	BY	DESCRIPTION	CHK	APP
E	27.02.20	MC	HIGHWAY ALIGNMENT REVISED	MC	ICB
D	10.01.20	MC	HIGHWAY ALIGNMENT REVISED	MC	ICB
C	03.12.19	MC	HIGHWAY ALIGNMENT REVISED	MC	ICB
B	27.11.19	MC	HIGHWAY ALIGNMENT REVISED	MC	ICB
A	15.11.19	MC	HIGHWAY ALIGNMENT REVISED	MC	ICB
STATUS			FOR INFORMATION		

HIGHWAY ALIGNMENT ALONG SEVEN HILLS ROAD SHEET 5 OF 5 (PRIVATE & CONFIDENTIAL)	
PROJECT: PINWOOD STUDIOS - SEVEN HILLS UPGRADE	CLIENT: PINWOOD STUDIOS GROUP

DRAWN:	MC	CHECKED:	DF	APPROVED:	JCB
PROJECT No:	ITL15189	SCALE @ A1:	1:500	DATE:	01.11.19
DRAWING No:	ITL15189-GA-018				REV E