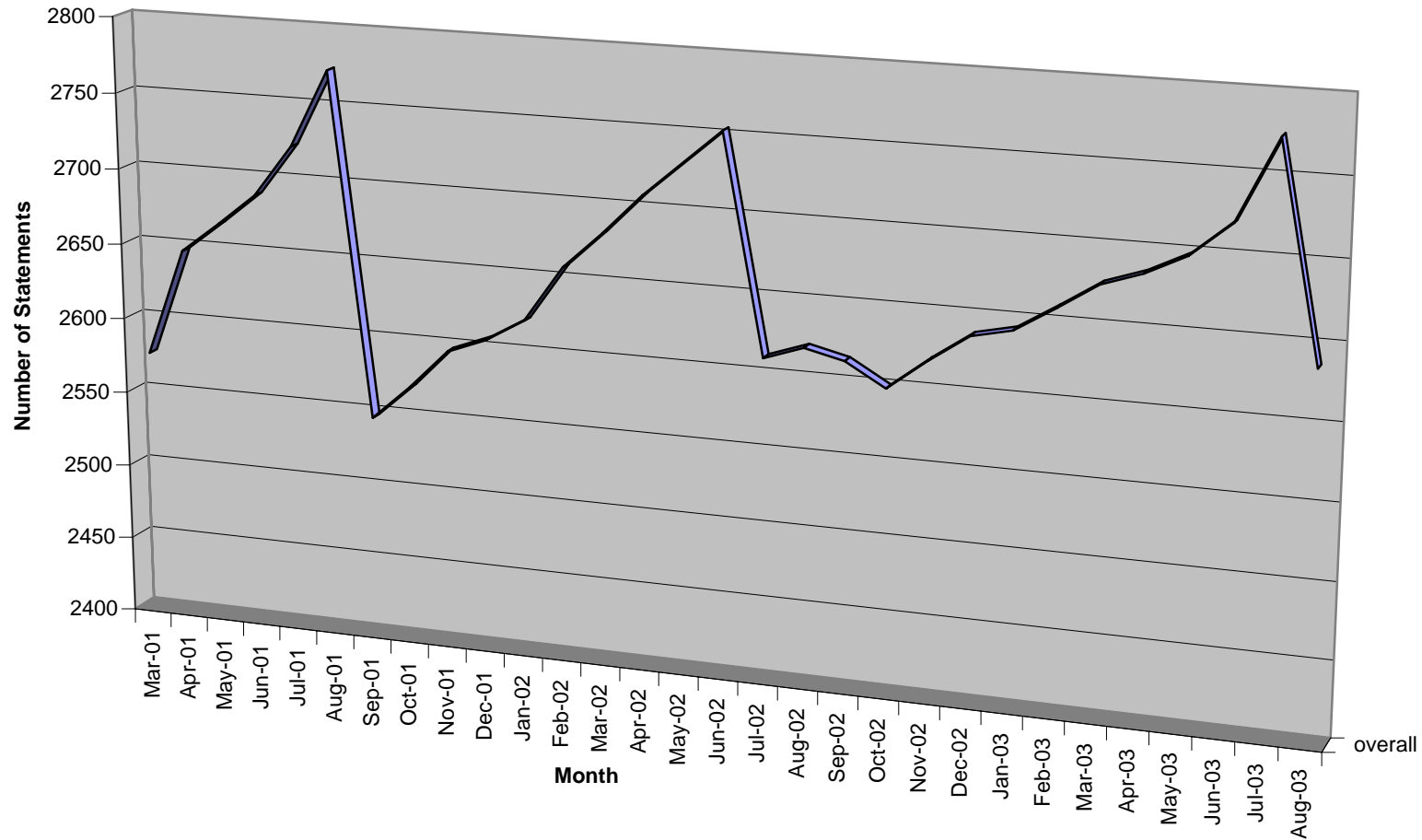


**Table 1**

Number of statements April 2001 - August 2003



**Notes**

\* Number of statements drops during July/August due to school leavers

\* The Number then gradually increases over the year as new statements as finalised

\* The Number of statements appears to be stable between 2500 and 2800.

	Mar-01	Apr-01	May-01	Jun-01	Jul-01	Aug-01	Sep-01	Oct-01	Nov-01	Dec-01	Jan-02	Feb-02	Mar-02	Apr-02	May-02	Jun-02	Jul-02	Aug-02	Sep-02	Oct-02	Nov-02	Dec-02	Jan-03	Feb-03	Mar-03	Apr-03	May-03	Jun-03	Jul-03	Aug-03
■ overall	2576	2647	2667	2688	2722	2773	2547	2570	2596	2606	2621	2658	2682	2708	2753	2611	2620	2614	2599	2619	2637	2643	2659	2676	2685	2698	2720	2774	2636	