



Buckinghamshire County Council

**Bucks Strategic Partnership Board
29 July 2009**

Draft Sustainable Community Strategy for South Bucks District

Sustainable Community Strategy

for South Bucks District 2009–2026



Agenda Item 7

South Bucks Partnership

Part of the Buckinghamshire family of county-wide and district level Sustainable Community Strategies



Contents:

Foreword	3
What is a Sustainable Community Strategy?	4
South Bucks in 2009	6
Our vision for South Bucks in 2026	7
Summary of key challenges	8
Delivering the vision for 2026	9
Themes, outcomes and cross-cutting themes	9
o Thriving Economy	10-11
o Sustainable Environment	12-13
o Safe Communities	14-15
o Health and Wellbeing for all	16-17
o Cohesive and Strong Communities	18-19
What each one of us can do to make our area a better place	20
Partnership working in Buckinghamshire	22

Foreword

by **Adrian Busby,** **Chairman of South Bucks** **Partnership**

This Sustainable Community Strategy sets out a positive vision for South Bucks District to 2026. It was commissioned by the South Bucks Partnership in September 2008 and is based on comprehensive consultation with local stakeholders, residents and the community and voluntary sector. Its aim is to set a framework for developing a sustainable community in South Bucks where people want to live and work now and in the future.

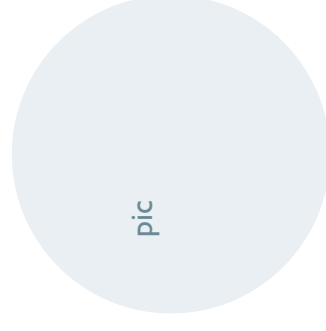
We have considered residents' views as well as those of business and community representatives, local parish councils and other interested parties on what makes South Bucks a good place to live and how to retain a high quality of life. These views have been included in this strategy, which we believe is both deliverable and achievable to shape the

district into what residents want it to be by 2026. Throughout the construction of this strategy, we have worked closely with partners who will be responsible for delivery, so that all stakeholders have agreed and are committed to achieving the vision.

By the year 2026 many things will have changed and there will have been many opportunities to improve the quality of life for local people. To sustain the very high quality of life for people living and working in the District we will need to ensure economic competitiveness, environmental sustainability and a safe, healthy and cohesive community. The population of South Bucks will change significantly between now and 2026. This will have an impact for the services that public, private and voluntary sector organisations provide, as the number of service users and their needs will change. Requirements for services such as healthcare, housing provision and leisure services are likely to change during

this period, particularly for our older residents.

The previous Community Strategy – The Shape of Things to Come – South Bucks 2006 – 2016 has been replaced by this new Sustainable Community Strategy, which will be regularly refreshed through consultation, to ensure that we continue to work towards what you, the residents, want South Bucks to be by 2026.



pic

What is a Sustainable Community Strategy?

It is the over-arching plan for South Bucks, setting out the key priorities for the area. It directly influences the work of partner organisations such as the police, local councils, community and voluntary organisations and fire and health services so that all can work effectively together for the benefit of residents.

The South Bucks Sustainable Community Strategy sets out a vision for South Bucks in 2026. Based on extensive consultation, its purpose is to develop a shared understanding of where the district is now, where it wants to be in 2026 and a plan for getting there. It looks to shape South Bucks as a place through balancing and integrating the social, economic and environmental components that define a community area. It is the means to address difficult cross-cutting issues such as economic direction, community cohesion, social exclusion and climate change. It is about finding new ways for partner organisations, local residents and businesses to work together. It will encourage collective responsibility and joint working to improve the delivery of those services that are important

to local people.

This strategy is owned by the South Bucks Partnership which draws together the work of all the key public sector, business and voluntary partners in the area to deliver the agreed priorities for the district. The strategy is part of the Buckinghamshire family of Sustainable Community Strategies, reflecting the agreed priorities at both the countywide level and in more detailed and tailored versions in each of the four district documents. The family of documents set out an integrated and complementary approach to community planning in Buckinghamshire.

Buckinghamshire Local Area Agreement

Central to the delivery of the family of Sustainable Community Strategies is the Buckinghamshire Local Area Agreement. Led and co-ordinated by the Bucks Strategic Partnership, the Local Area Agreement is a contract between partners in Buckinghamshire and the government to deliver measurable improvements to the quality of life and services for residents over a 3 year period. The agreement consists of an agreed framework of improvement targets which reflect the priorities in the Sustainable Community Strategies.

Links to spatial planning

The ambitions in this strategy cannot be delivered without linking directly to the spatial plans for the area. This is done through the 'Local Development Frameworks' at county and district level. These contain key development goals for Buckinghamshire and its districts, which align directly to the family of Sustainable Community Strategies..

South Bucks in 2009

South Bucks is a very attractive and popular District in which to live and work. It is relatively small at 141 square kilometres, and lies within the Metropolitan Green Belt area, with 87% of the land designated as Green Belt which includes agriculture and woodland. There are many small towns and villages within the District, the largest being Burnham, –eaconsfield and Gerrards Cross. These three towns have the best infrastructure and facilities. Most of the towns and villages have historic roots which are preserved through use of conservation areas and listed buildings. A number of larger towns border the District: Maidenhead, Slough, High Wycombe and London (Hillingdon). These centres provide shopping facilities and services not available within the District, and some jobs for residents. In return, South Bucks provides the open spaces which help meet the recreational needs of these larger centres. Close cross border working between the areas is important.

A large majority, 84%, of residents believe that South Bucks is a good place to live and assign

a high priority to conserving the attractive qualities of the District, including its natural and cultural heritage and the character of towns and villages. When asked what were the most important things that make somewhere good to live South Bucks residents' said good quality environment, sense of community spirit and low crime levels. In terms of what needs improving, residents identified activities for teenagers, affordable housing provision, traffic congestion and road and pavement repairs.

MAP

South Bucks in 2009 continued

Thriving Economy

South Bucks is a popular but expensive place to live and work. There is a strong economy with just under 5,000 businesses, many of these are small companies employing less than 25 people. South Bucks is home to a number of large employers including the nationally important Pinewood Studios, Martin Baker Aircraft (who manufacture aircraft ejector seats), Wyeth Laboratories, Servier and Robert Bosch. There are about 35,000 jobs in South Bucks many within film and media or related sector; pharmaceutical, professions including accountants and lawyers, and hotels and restaurants. With no major town in the District, business locations are scattered.

Buckinghamshire prides itself as the entrepreneurial heart of Britain. In South Bucks there is a high level of new business formation it has one of the highest number of new VAT registrations per residents nationally and the highest outside Greater London. 18% of the working age population are self-employed.

Residents are highly skilled with over 35% holding a degree level qualification. Many residents work within higher paid occupations as managers or professionals, as a consequence, earnings are significantly higher than average. Less positively, over 10% of residents have no qualifications. Unemployment is generally low compared and is currently approximately half the national average

The proximity of High Wycombe, Uxbridge, Slough and Maidenhead, combined with good road and rail access, has resulted in complex commuting patterns with approximately 19,000 people commuting in and out of the District. Retaining a broad balance between the number of local jobs and the size of the resident workforce, and encouraging more South Bucks residents to live and work locally, will help to reduce traffic congestion and provide wider environmental benefits.

South Bucks' wealth, popularity and limited availability of development land means its house prices are double the national average

and increasingly beyond the means of local people. Demand for affordable housing is high, and recent surveys indicate it to be considerably more than can be delivered. The District competes with London, Heathrow, Maidenhead, Windsor and the growth centres of Aylesbury and High Wycombe for both employment and employees. The location of the District near to London and other major towns and the presence of high speed rail link and M4, M40 and M25 motorways means there can be significant development pressures on the District.

The voluntary and community sector, and the individual contributions of its volunteers, are a highly valued aspect of Buckinghamshire's prosperity and of increasing importance for its future economic development.

Sustainable Environment

South Bucks had the second highest quality of life of any local authority in Britain according to the 2007 Halifax survey. Between 2006 and 2026, provision must be made for an annual average of 94 new homes per year,

with an increase in housing completions to meet anticipated need and demand. With 87% of the District in the Green Belt, it will be challenging to achieve this in a way that protects the Green Belt, the character of the towns and villages and the open green spaces which residents and visitors value so much. The Local Development Framework ... being developed to set out the best way of delivering this new development in a sustainable way. This was the subject of a major consultation in early 2009 which, having considered a number of options sets out the proposed spatial strategy, balancing the social, economic and environmental needs of the area. The larger towns have the widest range of facilities, services and jobs, as well as more redevelopment opportunities, and it is important to ensure that the needs of these settlements are met in a way which also safeguards the character of these towns.

The district is home to high quality landscapes, including part of the Chilterns Area of Outstanding Natural Beauty, Cliveden, the River Thames, Burnham Beeches and a

number of other areas, some of which are designated as country parks. It is important to enhance areas such as Colne Valley Park and to protect the character and distinctiveness of these landscapes. The District has a wealth of special interest including many registered parks and gardens, scheduled monuments and 18 Conservation Areas and more than 700 listed buildings. Over 545 hectares of land are designated as a Site of Special Scientific Interest (SSSI), with Burnham Beeches also being designated at a European level as a Special Area of Conservation (SAC). There are seven Local Nature Reserves within the district, covering some 93 hectares. It will be important to ensure that these special interests are safeguarded, including through the protection of the wildlife corridors that link the designated areas.

The carbon footprint of the District is high, with large homes and high levels of car ownership and use leading to some roads suffering congestion at busy times. The Energy Savings Trust Green Barometer Report III 2007 highlighted the fact that South Bucks had

the highest carbon footprint per capita in the whole of the UK. Helping and encouraging our residents to minimise their impact on the environment is particularly important for South Bucks. There is strong support for recycling and environmental initiatives however, further action needs to be taken to reduce the amount of residual waste sent to landfill. Air quality is monitored via three Air Quality Management Areas which have been designated along the M4, M25 and M40 corridors. Parts of the district are prone to flooding, particularly around the Thames and the Colne.

With a dispersed population, limited public transport and high car ownership, it will be important to ensure that new development is focussed in sustainable locations to reduce the reliance on the use of the car. It is equally important that the environmental impact of transportation, including particular freight movement, is mitigated. Climate change is already affecting our weather patterns and the likely impacts on the district will include greater flood risk, as well as periods of

South Bucks in 2009 continued

drought. The District will need to meet these challenges through adaptation, whilst at the same time embracing the opportunities that may arise from climate change.

Safe Communities

South Bucks is a safe place to live, but the fear of crime is a very real issue for many residents. In the 2008 Place Survey residents have identified the level of crime as important in making somewhere a good place to live and one of the top five issues most needing improving. However, over the last 5 years the percentage of residents who think levels of crime need improving is steadily getting less. Burglaries and theft from vehicles are comparatively high and are often drug related crimes that spill over from adjacent towns. The approach to addressing crime in South Bucks will increasingly depend on developing wider partnerships and co-operation across police forces.

South Bucks is engaged in the Neighbourhood Action Group (NAG) process and works with each of the 8 Neighbourhood Watch Groups

in the area to identify local priorities and solve issues in partnership with local communities, businesses and partner agencies. The most common priorities from the Neighbourhood Action Groups include antisocial behaviour including parking and speeding.

Improved Health and Wellbeing for All

Whilst South Bucks is a pleasant place to live, not everybody benefits as much as they should do and there is much to be done in tackling the deprivation found in small pockets in the District. Although the District's population is relatively healthy by most measures and life expectancy is significantly above the national average there are differences in health between the most and least disadvantaged.

Good health is not shared equally across the population. Rates of deaths from heart disease, strokes, cancer and hospital stays caused by alcohol are lower than average.

There are stark preventable inequalities in health between vulnerable groups and the rest of the population. Life expectancy in South Bucks in the most deprived 20% is 11 years

less than the most affluent 20% and there is a huge burden of preventable disease. There are nearly 100 smoking-related deaths a year. It is estimated 1 in 6 adults are obese and 1 in 7 adults binge drink. There are 1,200 children living in low income families.

It is essential that all residents are able to access the services and support they need.

This can be difficult in rural areas, particularly as many of the services are placed outside the District and public transport links are poor.

Residents have expressed concern about the availability of public transport and access to services in these areas. This particularly includes access to services and activities for older people, young people and those that are less mobile or do not have access to a car. Addressing health and deprivation requires a multi agency approach with targeted intervention for areas of deprivation and vulnerable groups and promotion of healthy lifestyles generally. Changing demographics indicate that the proportion of older people is increasing, and provisions and support to enable those who chose to live independently

as long as they can, will need to adapt to meet community needs.

Cohesive and Strong Communities

Community Cohesion lies at the heart of what makes a safe and strong community. It includes tackling problems such as access to employment, education and housing and the lack of daily interaction and communication with people from different backgrounds.

Our communities here in South Bucks are diverse and we need to make sure that all their needs are considered including the elderly, those without transport, teenagers, gypsy and travellers, those who live in rural areas and those with learning disabilities and mental health problems. A high number, 82% of residents agree that South Bucks is a place where people from different backgrounds get on well together. Future changes in demographics and diversity indicate that South Bucks will have an older population with less young people and an increase in Black and Minority Ethnic Communities and an increase in foreign and migrant workers.

A socially inclusive community is one which has good access to services, good social networks, decent housing, and adequate information and support. There is a strong voluntary and community sector within Buckinghamshire, however some services and organisations local to South Bucks are based outside the district making it difficult for some residents to access these services. Consistent feedback from vulnerable groups emphasises access to services and support being a real issue. The area faces challenges in maintaining cohesive communities with the predicted changes in demographics. It is important for all generations to have opportunities to be involved in their local communities, through engagement and volunteering.

The Cohesion and Inequalities Forum was established as a sub group of the South Bucks Partnership to take an overview of cohesion and inequalities in South Bucks. It is recognised that Cohesion and Inequalities cannot be tackled in isolation, but requires joined up working, the breadth of partners involved has provided a valuable insight and strategic view

of possible cohesion and inequalities issues in South Bucks.

Our vision for South Bucks in 2026...

South Bucks in 2026 will continue to be an attractive District in which to live and work with high living standards. It will provide an environment which meets the needs of its local communities in a sustainable manner, balancing environmental, social and economic needs. Approximately 64,000 people will live in the District and there will be a significant increase in the number of older people with a quarter of residents aged over 65 and less young people. The communities will become more diverse with a rise in Black and Minority Ethnic population and a higher percentage of young people from this community.

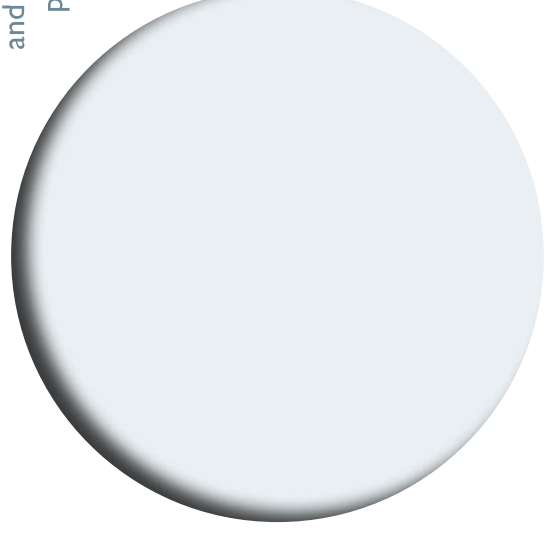
The Green Belt will continue to be conserved and accessible green space such as Burnham Beeches, the river Thames and the Chilterns will be a source of pride to residents, inspiring them to live low carbon lives. New high quality development and conservation will make a positive contribution to enhancing the character of the towns and villages with rural

areas safeguarded enabling them to flourish. Thriving towns and village centres will provide a range of retail and community facilities that meet local needs. New housing will be built in the most sustainable locations and will meet the demand for smaller family units and there will be more affordable accommodation, including social rented housing. Infrastructure will be provided to address local deficiencies and re-development of Wilton Park will bring about social and environmental benefits to Beaconsfield. Improved management of the transport networks will ease congestion, roads will be safer and public transport will be well used.

A prosperous, diverse economy will provide employment which many

residents will choose to take advantage of, living and working locally and so reducing commuting. There will be an entrepreneurial spirit in the business world, with a steady stream of new small and medium businesses providing job opportunities in balance with the skills of the available workforce. There will be a drop in the working age population balanced by a change in working patterns, with more people working for longer and an increase in flexible and part-time working and more home working. There will be an increase in foreign and migrant workers at the lower paid end of the market.

Residents continue to live long and healthy lives. A concentrated effort by both local agencies and individuals



has reduced the gap between the most and least disadvantaged. Residents take responsibility for leading healthy lifestyles and take advantage of the green space and leisure opportunities the District has to offer. Local people are involved in their communities, actively shaping local decisions, volunteering and supporting the elderly and vulnerable to live full and independent lives. Isolation in older people and those whose circumstances make them vulnerable is minimised.

The Police are an active part of the community, residents enjoy a safe environment with lower levels of crime and anti-social behaviour and reduced fear of crime. There will be improved support and activities for young people enabling them to contribute to community life. Public, private and voluntary sectors will work closely together to provide a range of

accessible services which meet the needs of the local communities particularly the elderly and vulnerable members of society.

Summary of Vision

South Bucks to be a place with:

- o A prosperous and diverse economy, with more people choosing to live and work locally;
- o Green space, thriving and attractive towns and villages, where our heritage is protected and affordable housing is available to help meet community needs;
- o A sustainable environment where people take pride in their community and live low carbon lives;
- o Lower levels of crime and anti-social behaviour, where the Police are an active part of the community and people are knowledgeable about how to prevent crime;
- o Good health which is enjoyed by all including those in deprived groups and where people take responsibility for their own wellbeing;
- o Active communities involved in shaping decisions locally and who support the elderly and vulnerable to live full and independent lives.

Summary of key challenges

There are a number of challenges to address if collectively partners are to deliver the vision set out in this strategy. These are:

- Conserving and enhancing the green space and natural environment of the District;
- Meeting the needs of a demographically changing and ageing population;
- Sustainable delivery of 1,880 new homes between 2006 and 2026, of the right type, and with the necessary supporting infrastructure;
- Protecting and enhancing the quality and character of our towns and villages whilst accommodating further development;
- Where and how to provide affordable housing, including for an ageing population and those whose circumstances make them vulnerable;
- Supporting the local economy to continue to thrive and support local jobs for local people;

- Encouraging the development of workforce skills for tomorrow's economy;
- Increasing the feeling of belonging to the community;
- Improving support and activities for teenagers and young people;
- Addressing disadvantage and health inequality in parts of the District;
- Addressing the causes of crime and the related fear of crime;
- Reducing the District's impact on the environment and addressing the challenges and opportunities posed by Climate Change;
- Improving road safety and the adverse impacts of traffic.

Delivering the Vision for 2026

Achieving the outcomes in this strategy will require concerted action by a range of public, private and voluntary sector bodies working in partnership at the neighbourhood, district and county level. The role of this document is not to set out detailed action plans for each outcome, but rather to set the overarching framework for promoting and improving the quality of life in the area.

We will review this Sustainable Community Strategy annually to make sure that it continues to reflect local people's view of the future and addresses new challenges as they emerge. As the priorities of the area change, the partnership will ensure this is reflected in the action plans of the partnership and individual partners. Action plans are set out in a variety of specific strategy documents such as the South Bucks Community Cohesion and Inequalities Strategy, Housing and

Homelessness Strategies, the Community Safety Partnership Plans and the Healthy Communities Strategy. Our local programmes, projects and neighbourhood working also support the strategy.

The outcomes are widely supported by National Indicators and local measures, including those already agreed in the Buckinghamshire Local Area Agreement, which will help us compare our performance against other areas. For each outcome we have identified specific projects and activities that target geographic areas or groups of people – and in some cases both. These will enable us to track the differences 'on the ground' for local residents and tell the story of South Bucks. The projects, activities and measures are presented in a separate supporting web-based document that can be found on our website at www.bucksisp.org.uk

Themes and Outcomes

This Sustainable Community Strategy is structured around five broad themes that reflect the areas that you have told us matter most:

Thriving
Economy

Sustainable
Environment

Safe
Communities

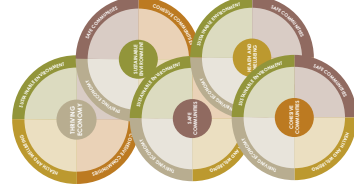
Health and
Wellbeing

Cohesive and Strong
Communities

For each theme we have identified key outcomes that will improve the quality of life in our district. Outcomes that are shown in **bold type** are shared aspirations across Buckinghamshire and will be found in the Sustainable Community Strategy for each District area and the County area – making a ‘family’ of plans. The outcomes in normal text show where the partnership in South Bucks District needs to focus locally – our areas are different and our plans reflect this individuality.

There is an overlap and link between the five themes in our strategy and taking action in one area will often have a positive effect on another too. For example, tackling crime and anti-social behaviour

in a location (Safer Communities) makes the area safer and more attractive for business to invest in (Thriving Economy). This is illustrated through the ‘wheel’ showing links between the themes.



Additionally, there are three cross-cutting themes which permeate the Sustainable Community Strategy, these will be considered in planning the actions to deliver the strategy and achieve the vision for 2026.

Responding to demographic change

The population of Buckinghamshire will increase due to the substantial growth in the north of the county and, at the same time, the demographics of the county will also alter significantly. The demographic make-up of South Bucks will change considerably by 2026. Without recognising and planning for the needs of this changing population, including the increasing proportion of older people, the outcomes set out in this strategy cannot be achieved.

The latest population figures show South Bucks to have a population of 64,300 in 2007 this is expected to remain roughly the same in 2026. This is as a result of small net in-migration coupled with a higher death than birth rate. The growth of the District is limited by the number of homes in the District

Cross Cutting Themes

and the fact that household sizes are expected to get smaller.

We currently have an older population with more residents over 40 and less residents in their 20's and 30's compared with the national average. By 2026 there is expected to be a 39% increase in those over 65, a 38% ...crease in the over 80s and an 18% decrease in those under 20. These demographic changes will place an increasing demand on health and social care and services must adapt accordingly. With an increasingly active 'third age' population other services such as leisure, libraries and adult education will also have to adapt and change.

Communities are expected to become more diverse with a larger black and minority ethnic community; this is currently estimated to be 10.68% and has risen steadily from 6.63% in 2001 and 3.30% in 1991. The Black and Minority Ethnic community are a much younger community and in 2001 make up 10% of residents under 20. There is some evidence that this community suffers from a slightly

higher risk of housing overcrowding. In South Bucks there is no evidence to show they suffer a higher degree of income deprivation and many live in our more affluent communities.

Addressing inequalities

Tackling disadvantage, wherever it occurs across the district, is crucial if we are to achieve the ambition for improved outcomes for South Bucks set out in the strategy. Our approach to delivering the strategy needs to take into account the targeted actions and ways of working which can best address the inequalities experienced by different groups and communities.

Hidden within the general affluence of South Bucks there are communities who face disadvantage and this can be overlooked. Over half the areas within the District fall within the least deprived 25% nationally and some within the least deprived 1%, however 2 areas within Burnham have above average deprivation. These areas in Burnham have higher employment deprivation and along with two areas in Iver have above average income

deprivation including for older residents. Many of our older residents are affluent but those who live in poverty are more likely to experience poorer health. They are less able to spend money heating their homes and therefore have an increased risk of developing heart attacks, strokes and chest infections. There are 1,200 children living in low income families many of these live in Burnham, Wexham and Iver; this can have long-term implications with regard to health, education, employment opportunities and they have a higher risk of being involved with crime.

Personal responsibility

This is a strategy for the community – and cannot be effectively delivered without the support and active involvement of residents. Key to this is some of the lifestyle changes that will help to address priorities such as improved health through active lifestyles, a sustainable environment through reduced waste and reducing carbon emissions. The section on page 24 lists some ideas of how every individual can help improve South Bucks as a place to live, work and visit.

Thriving Economy

“Lifelong enterprise”

This theme addresses the physical planning for the future, including infrastructure, housing, employment land and town centres as well as how to support the local economy and provide suitably trained staff for local employers. The planning aspects will largely be delivered by the Local Development Framework. Bucks Economic Development Strategy encourages support for existing business and small businesses.

Key challenges for a thriving economy in South Bucks

are to ensure a diverse economy with employment opportunities that meet the skills and needs of local workers. The economy is currently made up of a large number of small and medium sized businesses and there needs to be the support and infrastructure to help these businesses flourish and weather times of recession. There are opportunities for local people and businesses with the Olympics in 2012 holding the rowing at Dorney Lake, these need to be sustained where possible beyond the Olympics itself.

With the changing demographics there will be less young people in the workforce and businesses will need to become more flexible to adapt to changing working

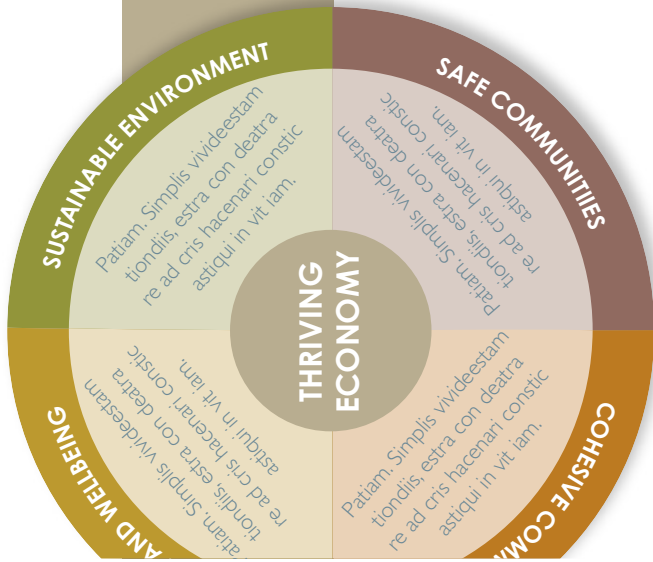
patterns and the needs of an older workforce. It is important to encourage more people to live and work locally and create employment opportunities to match the skills of the local people and thus reduce people’s need to commute long distances. In addressing these needs, the requirement for people in lower paid professions must be taken into account, which is likely to increase demand for affordable housing – a particular issue for South Bucks due to the high average house price. 10% of working age residents hold no qualifications, this could lead to deprivation unless their training needs are addressed. There is a need for those in education and employment to better develop skills employers will require in the future.

What you have told us:

- Improve the identity of the District as a place to do business with more support for smaller businesses and entrepreneurs – wireless connectivity, internet cafes, drop-in centres, small business printing and admin support stations.
- New developments to be sensitive to the local area and to include affordable housing for local people, green spaces, quiet spaces and supportive infrastructure.
- Sustain the rural economy by retaining local shops and services and avoid dormitory villages
- Reduce commuting through reducing people’s need to travel, improving public transport and encouraging businesses to



“..the entrepreneurial heart of Britain”



introduce flexible working patterns to reduce peak flow traffic.

- Improve links between businesses and the local communities and encourage employers both small and large to be greener and more socially responsible
- Make schools more responsive to the needs of all younger people
- Capitalise on the opportunities of the 2012 Olympics before, during and after the games
- Pinewood Studios is the centre of a major creative industries cluster, it is vital to support existing media and creative industries

We aim to:

Build business, enterprise and innovation and promote global competitiveness

- Signpost support for local businesses and families during times of growth and in difficult times
- Support a dynamic economy and encourage enterprise
- Advise local businesses on environmental, safety and health issues

Develop skills and employment for the future

- Encourage a greater dialogue between educational institutions and employers on the skills required both now and in the future
- Raise qualifications and skills levels within education and employment including the basic literacy and numeracy skills of those entering the workforce for the first time

Increase affordable housing

- Support the delivery of more affordable housing for local people entering the housing market, families and an ageing populations

Support strategic infrastructure requirements

- Retention of employment land
- Encourage appropriate development to support the community
- Carefully plan infrastructure to meet community needs whilst being sensitive to the environment
- Seek developer contributions towards new infrastructure
- Maintain essential services within our high streets and town and village centres

Promote investment in Buckinghamshire

- Enable local people and businesses to maximise opportunities generated by the Olympics 2012
- Attract appropriate inward investment and support new start-ups

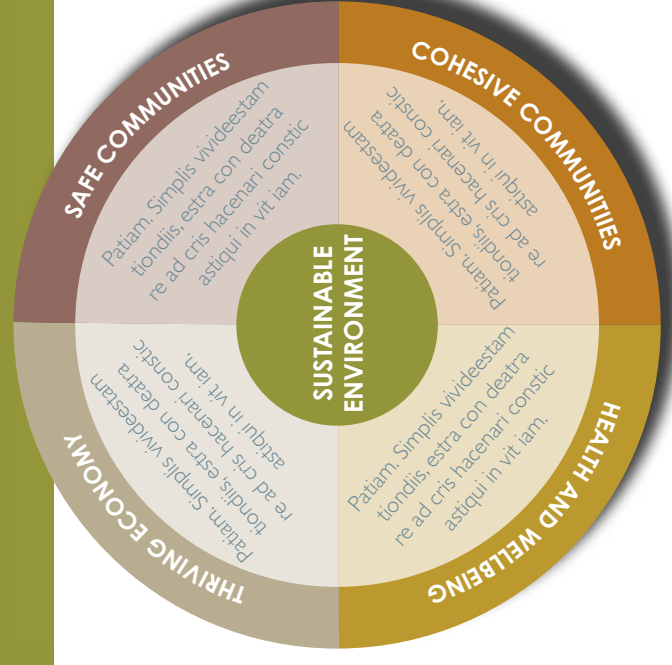
Sustainable Environment

This theme addresses the management of sustainable development alongside the conservation and enhancement of open spaces. It includes tackling climate change, flood risk, biodiversity, traffic congestion, pollution, water and waste management. The Local Development Framework will deliver this theme from a planning perspective.

Key challenges for a sustainable environment in South Bucks will be maintaining the high quality landscapes covering much of the area which make a large contribution to the character of the area and good quality of life enjoyed by residents. Inappropriate development could adversely affect both the enjoyment of these areas and the species of plants, animals and systems supported by them. The importance placed on protecting the Green Belt means there is limited land available for employment or housing and therefore much development will be delivered through redevelopment and refurbishment of existing brown field sites. It is important any new development meets local needs in a way that makes a positive contribution to the character and sense of place of the local area. New development

will need to take place in the most sustainable locations close to local services and employment to minimise the need for travel and offer more sustainable modes of travel in order to minimise emissions.

South Bucks is one of the UK's highest users of gas and electricity per household, so as well as ensuring new and existing development is energy efficient (including encouraging the development of zero carbon buildings), helping and encouraging residents to be more energy efficient in their homes and to minimise their impact on the environment is particularly important. Whilst there is strong support for recycling, more work needs to be done to reduce residual waste (both domestic and commercial). Maintaining levels of street cleanliness and working with partners to



reduce fly-tipping will help ensure a high quality local environment. The risk of flooding tends to be limited to areas close to the Rivers Thames and Colne and their tributaries, but include Burnham, one of the largest settlements, as well as Taplow, Dorney, and New Denham.



*“Protecting our heritage,
protecting our future.”*

What you have told us:

- Retain the character and heritage of local towns
- Safeguard the Green Belt and areas of outstanding natural beauty and improve facilities and develop opportunities for leisure and employment
- Improve community pride with the local area
- Develop more opportunities for conservation and biodiversity
- Convince individuals to reduce their environmental impact and carbon footprint
- Reduce waste to landfill and further expand opportunities to recycle including for local businesses
- Maintain a clean environment with low levels of pollution and reduce the environmental impacts of transport
- Road and pavement repairs and reducing traffic congestion were the things residents felt most needed improving in the 2008 Place Survey

We aim to::

Tackle climate change

- Reduce CO2 emissions in the District and adapt to the impacts of climate change
- Promote energy saving including the use and availability of alternative fuels and modes of transport and by increasing climate awareness in the community
- Reduce resource use and consumption including through purchasing decisions, improved monitoring and reduced energy consumption

Enhance and protect local environment

- Maintain public spaces in a clean manner
- Minimise air pollution, including enabling home working through improved technology solutions
- Secure the improvement of the Green Belt without the need for inappropriate development

- Shape development in the built environment to conserve and enhance the character of the local area whilst meeting changing local needs
- Protect and enhance the historic environment, natural environment and open spaces, promoting biodiversity
- Manage flood risk

Reduce waste, reuse resources, increase recycling and energy recovery

- Minimise waste for disposal by reducing, reusing and recycling as much waste as possible

Efficiently manage and maintain the transport network

- Encourage more sustainable forms of transport and increase travel choices to help address congestion
- Mitigate the environmental impact of transport, in particular that associated with freight movement

Safe Communities

This theme addresses crime and safety issues, including tackling the harms caused by drugs and alcohol. Priorities to make South Bucks safer are identified by the South Bucks Community Safety Partnership and outlined in the South Bucks Community Safety Strategy.

Key challenges for a safe communities in South Bucks are that the level of crime has been identified by residents as one of the most important things when asked what makes somewhere a good place to live and one of the top issues most in need of improving. In recent past however, the number of residents who think it needs improving has reduced significantly. Burglaries and theft from vehicles are comparatively high. The challenge is to tackle the route causes of crime, 55% of offenders are linked to drugs and most offenders travel in from adjacent areas. Close partnership working with neighbouring authorities, especially Slough, is particularly important to offer support to offenders to reduce re-offending. In a changing economy, less money can lead to more crimes.

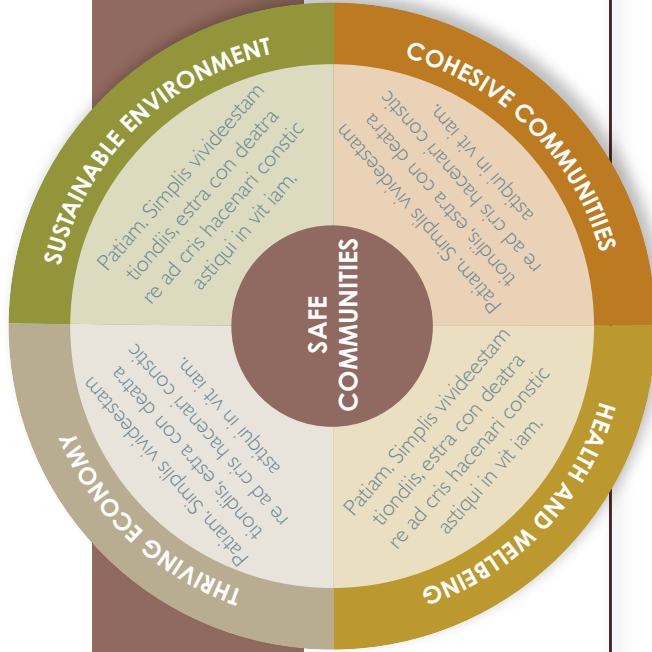
Addressing anti-social behaviour including speeding and parking is a top priority identified by all the Neighbourhood Action Groups. Over 3500 anti-social behaviour incidents were recorded in a year, including noise complaints, fly-tipping, graffiti, abandoned vehicles and criminal damage. The challenge will be to target specific areas of anti-social behaviour, establishing high local standards to tackle anti-social behaviour in schools with more youth facilities and community projects that develop intergenerational links. Alongside this, to reduce the fear of crime there is a need to encourage positive reporting of crime by the media especially to encourage them to provide a positive view of young people. Over 70 people are killed or seriously injured on our roads each year, this is higher than the average for England, and residents have identified the need to improve the impact of traffic and road safety.

What you have told us:

- Continue to reduce acquisitive crime and maintain low levels of home grown offenders
- Retain and further develop links with areas outside Bucks to reduce travelling offenders – engage with schools and develop better approach to integrated offender management with neighbouring areas
- Focus on preventative activities; understanding why people resort to crime, identifying and tackling inequalities, improving the way people look after their properties and possessions and developing supportive neighbours particularly for the elderly and vulnerable.



“Being safe, feeling safe”



- Target specific areas of anti-social behaviour and develop youth facilities and intergenerational links. Provide more youth centres/activities for younger people and involve them in these projects
- Continue to closely engage with communities and strengthen local Neighbourhood Action Groups and Neighbourhood Watch
- Stronger Police and local Community Support Officer presence with strong relationship and understanding of local communities
- Reduce fear of crime, encourage reporting of positive stories and provide a positive view of younger people
- Improve road safety and reduce the number of serious and fatal casualties

We aim to:

Reduce crime (including anti-social behaviour)

- Reduce the impact of anti-social behaviour in our community
- Reduce serious acquisitive crime
- Continue to tackle the root causes of crime including working across our boundaries to reduce offenders travelling into South Bucks from other areas
- Increase in Police resources to reflect provision to the rest of Buckinghamshire

Reduce fear of crime

- Help local people to feel safe by encouraging responsible and positive reporting of crime
- Support for victims of crime
- Clean up environmental impacts of crime, such as graffiti, in partnership with local residents and businesses
- Empower local people to reduce their risk of becoming a victim and encourage community involvement

e.g. via Neighbourhood Watch / Neighbourhood Action Groups

- Increase public confidence by communicating action taken to reduce crime and disorder

Reduce the harms caused by alcohol and drugs

- Reduce drug, alcohol and substance misuse

Improve the safety of local people

- Improve Road Safety
- Ensure safety of young people and vulnerable adults
- Develop a Home Safety Check initiative in the District
- Reduce the risk of death or injury from dwelling fires and promote fire safety

Safe development

- Design developments to minimise opportunities for crime

Sustain local resilience to violent extremism

- Build strong community links

Health and Wellbeing

This theme addresses the general health of the community; in particular health inequalities, healthy lifestyles, including leisure and recreational activities and homelessness. It addresses the issues of an older population and those who are more vulnerable, such as increased healthcare needs, social care, transport and accommodation needs. The Primary Care Trust Strategy and Bucks Healthy Community Strategy help deliver this theme.

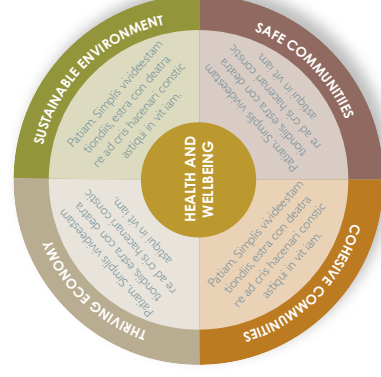
Key challenges for health and wellbeing in South Bucks

is to ensure the benefits of good health are shared equally and we address health inequalities and improve the health of and reduce the gap in life-expectancy between the most and least disadvantaged communities. It is essential all residents are able to access the support and healthcare services they need, this includes community transport options for those who are less mobile or without access to a car. A key question for the future is how best to care for vulnerable people in our society and how best to help older residents maintain their independence and live full and active lives. There are no hospitals in the District, and many GP surgeries are small and so unable to take on the wider role of a health centre. Gerrards Cross has no GP surgeries, the closest being in Chalfont St Peter in the Chiltern District.

A key challenge is to improve health information with a focus on self-help and prevention and to educate residents to live more healthy lifestyles. With the aim to reduce obesity particularly amongst the young, binge drinking, improve diets and encourage active lifestyles. Limited provision of open space to the east and centre of the area may affect access to recreational activities and some areas are inaccessible to the public or of poor quality.

What you have told us:

- Retain the good health of the district and reduce the relative health deprivation
- Retain local delivery of health facilities that are accessible and available to everyone, including Burnham Health Centre
- Health promotion, focus on self-help, prevention and early intervention and look for different ways to get the message across,
- Improve access to mental health help
- Reduce isolation for the elderly and vulnerable by increasing warden supported accommodation, expanding clubs and day centres, voluntary home visits and enhanced volunteer transport schemes
- More accessible health facilities for older people and better dementia services
- Make “Every Child Matters” really work and promote healthy lifestyles to young people including sensible drinking, active lifestyles and sexual health
- Reduce obesity particularly in young people through better nutritional awareness, access to leisure facilities and hot meals in schools
- Provision of sufficient and appropriate infrastructure to enable vulnerable people to occupy their place appropriately – key need for housing and employment including those who have issues relating to substance misuse



“Healthier, happier and longer lives”

We aim to:

Promote healthy lifestyles

- Improve mental health
- Reduce obesity, particularly in young people
- Seek to protect and enhance areas of recreational open space to help improve the long-term health and well-being of our communities
- Increase participation in cultural and sporting activities through businesses, schools, leisure and community organisations

- Maintain Health and Safety standards in workplaces and food outlets
- Reduce the number of smokers and enforce the Health Act requirements relating to smoking in public buildings
- Reduce the number of high risk and increasing risk drinkers

Reduce health inequalities

- Reduce health inequalities and ensure comprehensive information on support

and services is available to everyone

Improve quality of life for an ageing population

- Maintain older people in their homes for longer
- Improve the health of the elderly in sheltered accommodation through exercise
- Secure additional provision for specialist accommodation for the elderly
- Improve affordable warmth

Improve quality of life for children and young people

- Secure increased provision and promotion of positive activities for young people
- Close the gap between the most advantaged and disadvantaged children and young people in our community

Reduce homelessness

- Co-ordinate the approach to those at risk of homelessness
- Identify the right accommodation for those with special needs

Provide well connected communities

- Improve accessibility of services and support for all residents
- Target services tailored to meet the needs of individuals - look for opportunities to bring services together and reduce social isolation particularly in rural areas
- Improve rural transport and access to services
- Improve transport links and accessibility to health and leisure facilities
- Improve access to recreational opportunities, particularly for hard to reach groups

Cohesive and Strong Communities

This theme addresses the “glue” which holds the community together – the sense of belonging, community involvement and active citizenship. Priorities to ensure community cohesion are identified by the South Bucks Cohesion and Inequalities Group and outlined in the South Bucks Community Cohesion and Inequalities Strategy.

Key challenges for cohesive and strong communities in South Bucks

is how to develop a sense of community so everyone has the opportunity to feel part of their community. A strong community spirit enhances the quality of life in an area, giving the opportunity for all ages and backgrounds to be involved in their community through engagement and volunteering. The communities in South Bucks will change considerably by 2026, we expect an older population with 39% increase in the over 65s, less young people, and more diverse communities with a larger black and minority ethnic community and more migrant workers. It is important that these changes in population are planned for to promote inclusion for all and avoid tensions developing within our communities.

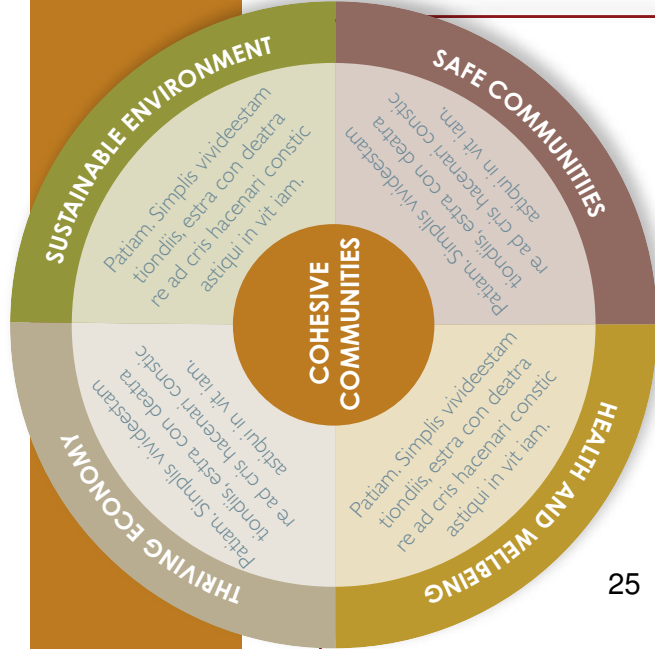
Another challenge will be to effectively engage with all sections of the community to be clear what the diverse needs are of different groups and to support vulnerable people and those with special needs to live full and inclusive lives within their community. Retaining shops and community services in towns and villages such as Post Offices, halls and libraries provide a focus to community life and provide essential services, particularly for those with limited mobility.

What you have told us:

- Good access to information at a local level, including new resident packs, publicity, local information.
- People like a pleasant environment with green and open spaces, helps people to identify with their surroundings and feel proud of where they live
- Whole life-cycle support to enable people to feel supported at different stages of their lives and to enable older people to stay in communities. Emphasis on the way people can get involved in helping others especially as the community gets older
- Encourage community groups, volunteers, community events and initiatives and help support these by helping with Criminal Records Bureau checks and risk assessments
- Activities available for people who can feel isolated, parents at home with young children, home workers, carers, older people.



“Strong, confident and active communities”



We aim to:

Sustain and grow a thriving voluntary and community sector

Support a thriving community and voluntary sector to enable active and cohesive communities through:

- Increasing community participation and volunteering
- Encourage employees of local businesses to volunteer

- Promote and support community and local events, and community information with focal points such as post offices, village halls, libraries

Reduce levels of disadvantage

- Reduce social isolation particularly for older people and in rural areas
- Whole life-cycle support to enable people to be supported at different stages of their lives

Increase confidence of communities

- Recognise and support good community leaders (including elected representatives)
- Encourage communities to identify and deliver local solutions through encouraging people, including the young, to have a say in decision-making

- Tackle inequalities through better engagement with vulnerable and ethnic groups, including those with disabilities
- Ensure information about services (both statutory and the community and voluntary sector) is accessible and promoted throughout communities and to front line workers, ensuring all residents are informed of support available to them

All communities get on well together

- Improve community spirit (e.g. increased contact and understanding between people from different parts of the community)

- Promote friendly, multi-cultural mixing and reduce concerns/misconceptions about immigration
- Reduce barriers to involvement and encourage everyone to participate and contribute to consultations and provide feedback and demonstrate views are listened to
- 2012 Olympics provides and opportunity to create a sense of pride for the area.
- Improve public/voluntary transport crucial to enable people to get involved.

What each one of us can do to make Chiltern a better place

We all have a part to play in making South Bucks and Buckinghamshire a place we identify with and feel proud of. People have rights and responsibilities and our Partnerships will respect and promote those rights, whilst, at the same time encouraging personal responsibility. It is essential for individuals and communities to take action if our shared vision is to become a reality, as many improvements will require a combination of partnership work and lifestyle actions.

All the Buckinghamshire Local Strategic Partnerships are actively encouraging everyone in their areas to do something to help themselves and their local community, as this will directly help to achieve the outcomes in this Sustainable Community Strategy.

- Could you do at least one new activity from the list to help?
- Take simple crime and fire prevention measures by locking doors and windows, fitting alarms, removing valuables from cars and security marking property.
 - Join Neighbourhood Watch or other local watch schemes.
 - Buy and fit smoke alarms and regularly check the batteries to make sure the alarms are working.
 - Adopt healthy lifestyles: eat healthily, reduce smoking and sensible alcohol intake to improve physical and mental wellbeing
 - Try to get at least half an hour of moderate exercise five times a week.
 - Recycle as much household waste as possible and try to save energy around your home.
 - Look out for neighbours, especially if they are elderly or frail.

- Join a local group or charity as a volunteer (Volunteer Centres can point you in the right direction).
- Vote in elections and take part in local democracy.
- Support local shops, producers and produce.
- Learn a new skill for work or pleasure.
- Walk, cycle or take public transport wherever possible.
- Help to keep your community clean and tidy.

This list is not comprehensive and we encourage individuals and communities to add their own ideas to suit their particular needs.



Partnership Working in Bucks



