

## Bucks Strategic Partnership Board 4 May 2010 Presentations


Agenda Item	Page No
5 BROADBAND IN BUCKINGHAMSHIRE	1 - 12
6 BUCKINGHAMSHIRE COMMUNITY FOUNDATION	13 - 18




INVESTOR IN PEOPLE








**Project Better Broadband for Bucks** - for BSP discussion 04/05/2010




**Agenda**


- The outline strategy
- The current state of provision & size of the task
- What is in prospect from the market
- Existing local solutions
- Project plan and progress
- Aspects to resolve
- Kent / Norfolk / others



1




**Project Better Broadband for Bucks**



**Outline strategy**

- 1. **Urban areas and New Build**
  - Lobby mainstream commercial suppliers and building development companies to provide high speed fibre solutions for Bucks as a priority, to support “the Entrepreneurial Heart of Britain”
  - Facilitate cooperation between developers and local authorities (Planning, transport etc) to make these developments easier
  - Provide awareness education and help to stimulate demand, so providing revenues to the service providers encouraging further developments



2



## Project Better Broadband for Bucks

### Outline strategy

#### ▪ 2. Rural and 'Not-Spot' areas - short term tactical

- identify poor / not spots and provide funding to assist with implementation of (probably wireless) solutions
- prioritising pareto of small number of areas with greatest number of premises
- assume ~10Mbps service, but extensible speed and reach
- registration of requests for demand volume

#### • Medium term

- consider mix of technologies (wireless / fibre etc)
- selection of supplier partners and business models
- consider share of networks, e.g. schools
- consider aggregation of public networks, e.g. BCC, PCT, Fire

#### • Longer term – increase to 40 Mbps & extend county-wide

3



## Project Better Broadband for Bucks

### Where are we now ?

Mapping of present speeds – all post codes < 2Mb

Numbers of premises within each post code / area

BT / Openreach FTTC announcements

Areas already covered by Wireless (Village Networks)

Exploration for other potential providers (technical / commercial)

Questionnaire for demand assessment – distribution tbc

How to prioritise next areas

- ? greatest % of premises in poor spots
- ? business vs residential
- ? cost / ease of supply
- ? demand assessment

4



### Project Better Broadband for Bucks



### The current state of provision & size of the task

	postcodes	Premises	Residential	Business
all Bucks (excl MK)	14300	209505	199172	10333
<2mbs	2869	40587	39060	1527
	20.06%	19.37%	19.61%	14.78%

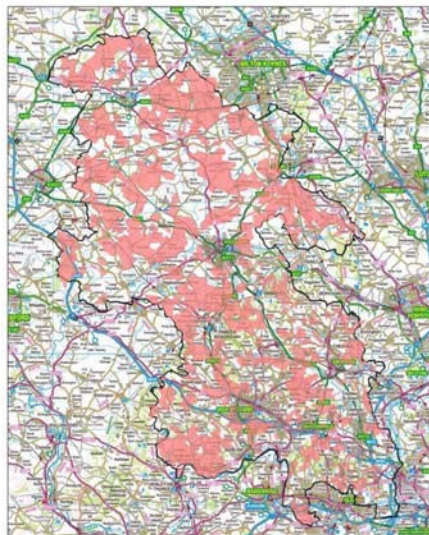


### The current state of provision & size of the task



Present ADSL, speed less than 2 Mbs (shaded pink)

white is 2 Mbs or better, (up to 8)



Slow / No Broadband by Postcode



Scale 1:200,000 A43





### What is in prospect from the market

#### BT proposed FTTC (for phases 4B & 5):

"Today's announcement signals the biggest phase of the UK-wide project to date with 76 exchanges to be upgraded in the South East between autumn 2010 and summer 2011,"

#### Openreach - indicative roll-out schedule

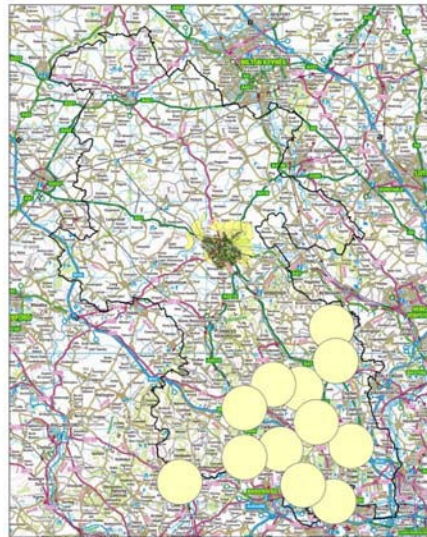
June 2010	AYLESBURY HENLEY ON THAMES
Sept 2010	GERRARDS CROSS HOLMER GREEN
Dec 2010	BOURNE END BURNHAM HIGH WYCOMBE MARLOW PENN SLOUGH  MILTON KEYNES, WOLVERTON, SHENLEY CHURCH END
Mar 2011	AMERSHAM BEACONSFIELD CHESHAM
TBC	NEWPORT PAGNELL

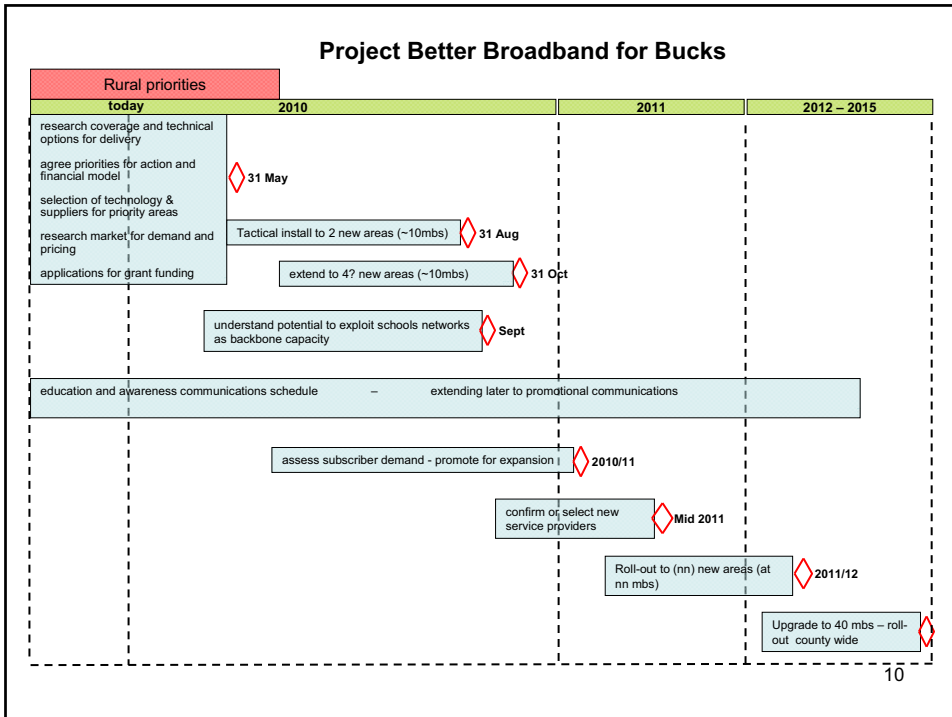
#### Openreach actual planning (Phase 4B)

Detail for Aylesbury, Gerrards Cross, Henley on Thames, Holmer Green

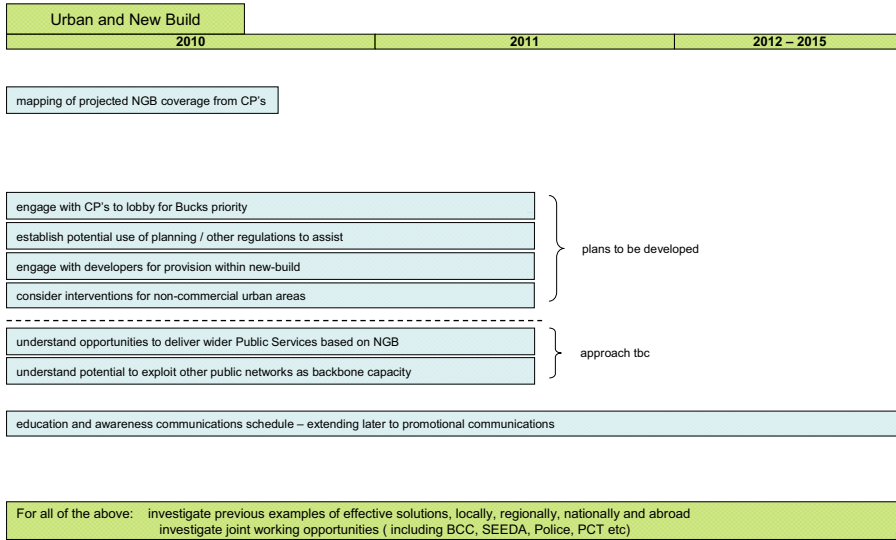


### FTTC in prospect





## Project Better Broadband for Bucks



11

## Project Better Broadband for Bucks



### Aspects to resolve

- Prioritisation of BERP intervention
  - ? greatest % of premises in poor spots
  - ? business vs residential
  - ? cost / ease of supply
  - ? demand assessment
- Selection of suppliers
- Business model for operating with suppliers
  - Return for funding, avoidance of excessive profits, reinvestment
- Mix of technologies (fibre + wireless combinations)
- Exploiting existing networks e.g. schools
- Wider consolidation / aggregation models for public networks
- Kent / Norfolk / others



12



## Prioritisation

	Short PC poor nos	Total 40587	Residential 39060	Business 1527	del points % of poor	business % of poor
	HP12 4	2334	2267	67	5.75	4.39
	MK17 0	1837	1758	79	4.53	5.17
	HP21 9	1799	1795	4	4.43	0.26
	HP10 9	1685	1582	103	4.15	18%
Mapping of present speeds –	HP13 5	1471	1457	14	3.62	0.92
• 2869 post codes < 2Mb	HP19 7	1426	1409	17	3.51	1.11
• rolled up is 94 'sectors'	HP13 7	1193	1178	15	2.94	0.98
• 40,587 premises	MK18 2	1190	1166	24	2.93	1.57
• 39,060 residential	LU7 0	1141	1099	42	2.81	2.75
• 1527 business	HP9 2	1106	1085	21	2.73	1.38
• only 4 areas with > 4 %	SL2 4	1024	996	28	2.52	1.83
of target audience / market	HP22 5	912	881	31	2.25	42%
• another 8 have > 2% < 3.6 %	HP18 0	780	667	113	1.92	7.40
• 27 cover 1% - 2%	SLO 0	776	756	20	1.91	1.31
• vast majority 55, < 0. 9%	HP16 0	758	735	23	1.87	1.51
	HP7 0	748	703	45	1.84	2.95
	HP21 8	735	726	9	1.81	0.59
	SL7 3	724	698	26	1.78	1.70
	HP27 0	704	688	16	1.73	1.05
	HP27 9	667	623	44	1.64	2.88
	HP14 3	576	526	50	1.42	3.27
	HP10 0	568	557	11	1.40	0.72
	HP9 1	550	546	4	1.36	0.26
	SL9 0	548	535	13	1.35	0.85
	HP12 3	547	504	43	1.35	2.82
	HP17 8	542	520	22	1.34	1.44
	SL7 2	532	523	9	1.31	0.59
	MK18 4	491	474	17	1.21	1.11
	OX27 0	491	475	16	1.21	1.05
	HP14 4	490	463	27	1.21	1.77
	HP21 7	479	458	21	1.18	1.38
	HP6 5	477	472	5	1.18	0.33
	HP18 9	474	443	31	1.17	13.03
	HP15 6	467	459	8	1.15	0.52

### Assessing demand –

- Questionnaires for desire and willingness to pay



## Project Better Broadband for Bucks

### Business model for operating

- State aid considerations; return for funding, avoidance of excessive profits, reinvestment potential, avoidance of de-facto local monopoly

### Some options to consider

- Invite bids from companies to deliver services on top of grant for infrastructure set up
- Public sector unit (BCC) as a supplier / operator
- BCC / BELP / other to take equity stake in a commercial company – or Joint Venture
- Form a not for profit company (SPV) buying in expertise or subcontract for service delivery (charitable trust?)





### Project Better Broadband for Bucks

#### ▪ N Yorks - Yorkshire Forward / NYnet

Significant EU grant funding  
Public sector company providing open access infrastructure  
For commercial internet service providers  
Also, NextGenUs – rural community interest company,  
recycling surpluses for community interests

#### ▪ Kent

KCC funded Public Service N/W (county, districts, schools, fire)  
KCC provide grant funding for rural communities infrastructure  
Based on using Schools links on county network  
Local commercial suppliers offer direct service (mostly wireless)

#### ▪ Norfolk

NCC funded Public Service N/W  
Also funded wireless network for rural village, using school  
link; internet service provided by BT over CC infrastructure

#### ▪ Hampshire / others - tba



### Project Better Broadband for Bucks

#### Network sharing / aggregation ?

- Use of schools links to BCC network for reach into rural areas
  - political agreement
  - technical concerns
  - commercial implications – public / commercial usage
- Public network aggregation
  - PCT, Fire, County, Schools, Districts, Police
    - political agreement
    - technical concerns
    - commercial implications – public / commercial usage



## Project Better Broadband for Bucks

### General Questions before table discussions



17



## Project Better Broadband for Bucks

### 3 questions for table discussions – 15 mins each:

#### Does the BSP Board support the overall case as set out?

- Is there sufficient information available to inform this support?  
Any gaps?

#### Discussion on the models of delivery

- Are the options for potential models of delivery clear to Members?
- What are their respective advantages/disadvantages?
- What are members' views in informing the way forward?

#### Discussion on potential for exploiting shared networks

- What is the potential for shared networks?
- Which partners could be involved?
- What are members' views on opportunities/challenges in developing shared networks?



18



### Project Better Broadband for Bucks

**Question 1 - Is there sufficient information available to inform this support? Any gaps?**

BSP partners are asked to commit to:

- a. Incorporating the need for high-speed broadband into their policies and strategies
- b. Providing a welcome planning and enabling environment where applicable
- c. Create awareness and stimulate demand amongst your communities
- d. Increase the usage of high-speed services through your own delivery of services
- e. Providing investment to support the programme



### Project Better Broadband for Bucks

**Question 2 - Are the options for potential models of delivery clear to Members?  
What are their respective advantages/disadvantages?  
What are members' views in informing the way forward?**

#### Business model for operating

- State aid considerations; return for funding, avoidance of excessive profits, reinvestment potential, avoidance of de-facto local monopoly

#### Some options to consider

- Invite bids from companies to deliver services on top of grant for infrastructure set up
- Public sector unit (BCC) as a supplier / operator
- BCC / BELP / other to take equity stake in a commercial company – or Joint Venture
- Form a not for profit company (SPV) buying in expertise or subcontract for service delivery (charitable trust?)



## Project Better Broadband for Bucks

**Question 3 What is the potential for shared networks?  
Which partners could be involved?  
What are members' views on opportunities/challenges  
in developing shared networks?**

### Network sharing / aggregation ?

- Use of schools links to BCC network for reach into rural areas
  - political agreement
  - technical concerns
  - commercial implications – public / commercial usage
- Public network aggregation
  - PCT, Fire, County, Schools, Districts, Police
    - political agreement
    - technical concerns
    - commercial implications – public / commercial usage

21





## Buckinghamshire Community Foundation

4 May 2010



BUCKINGHAMSHIRE  
COMMUNITY FOUNDATION

Connecting people who  
care with causes that matter

BUCKS STRATEGIC  
PARTNERSHIP



*promoting prosperity, tackling inequalities*

## A startling fact about Buckinghamshire



**There are  
twice  
as many charities  
in Buckinghamshire  
per head of population  
than the national average.**

Source: Charity Commission 2010 based on number of registered charities.  
Bucks has one charity for every 190 people

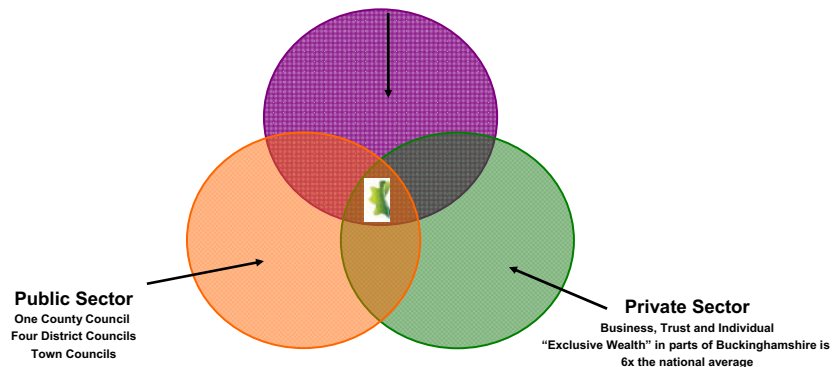
2

## BCF brings together the Public, Private and VCS sectors



### Voluntary & Community Sector

BCF is part of Compact, Change Up and BIG networks



3

## BCF is here for the long term...



- Since 2000, BCF has made grants totalling £2.7 million to more than 800 organisations in all parts of the county
- BCF is part of a national Community Foundation Network, 57 foundations, endowment £160M, grants of c£55M pa
- BCF has 5 paid staff, processing 400 grants applications per annum through an independent Grants Panel
- BCF has achieved Quality Accreditation Standard 1, approved by the Charity Commission
- BCF's administration costs are less than 10% of annual income

4



## And we're out and about...



**Aylesbury**



**Buckingham  
Library**



**South Bucks  
Council offices**



**County Funding  
Fairs**



**Outreach  
advice &  
support**



5

## Helping develop local capacity...



### **Aylesbury Healthy Living Centre**

"It's quite unbelievable where  
we've come from."

**Samantha Hall**



### **Wycombe Winter Night Shelter**

"The support of the Foundation  
during our reach into the  
unknown was so reassuring."

**WWNS Board Member**



### **Travellers Well-Being Project**

"The timing of this ground-  
breaking project is particularly  
appropriate."

**Dr Margaret Greenfields**



6

## BCF has a track record of managing statutory grants



- **Local Network Fund 2003-06:** £0.25 million pa
- **Community Support Fund 2007:** £0.05 million
- **Other Local Authority funds 2003-08:** £0.03 million pa
- **Grassroots Grants 2009-10:** £0.13 million pa
- **BSP 2009:** £0.1 million

7

## BSP Fund 2009: grants of £90K



<b>Aylesbury Credit Union:</b> development officer	<b>£20,000</b>
<b>Careers Springboard:</b> administrator	<b>£19,000</b>
<b>Lane End Oasis Centre:</b> skills training for L-T unemployed	<b>£20,000</b>
<b>Wycombe Winter Night Shelter:</b> support for 30 guests	<b>£20,000</b>
<b>Youth Concern Uptown Coffee Bar:</b> training for unemployed	<b>£11,000</b>

8

---

## Responding to the challenge



**We look forward  
to continuing  
to work  
in partnership  
with BSP  
and  
with other public bodies**

**What can we do to help you  
help community groups to thrive?**

9

