



Buckinghamshire & Milton Keynes Fire Authority

**MAKING YOU SAFER**

PREVENTING PROTECTING RESPONDING

[WWW.BUCKSFIRE.GOV.UK](http://WWW.BUCKSFIRE.GOV.UK)

# Buckinghamshire Fire and Rescue Service and Local Area Forums

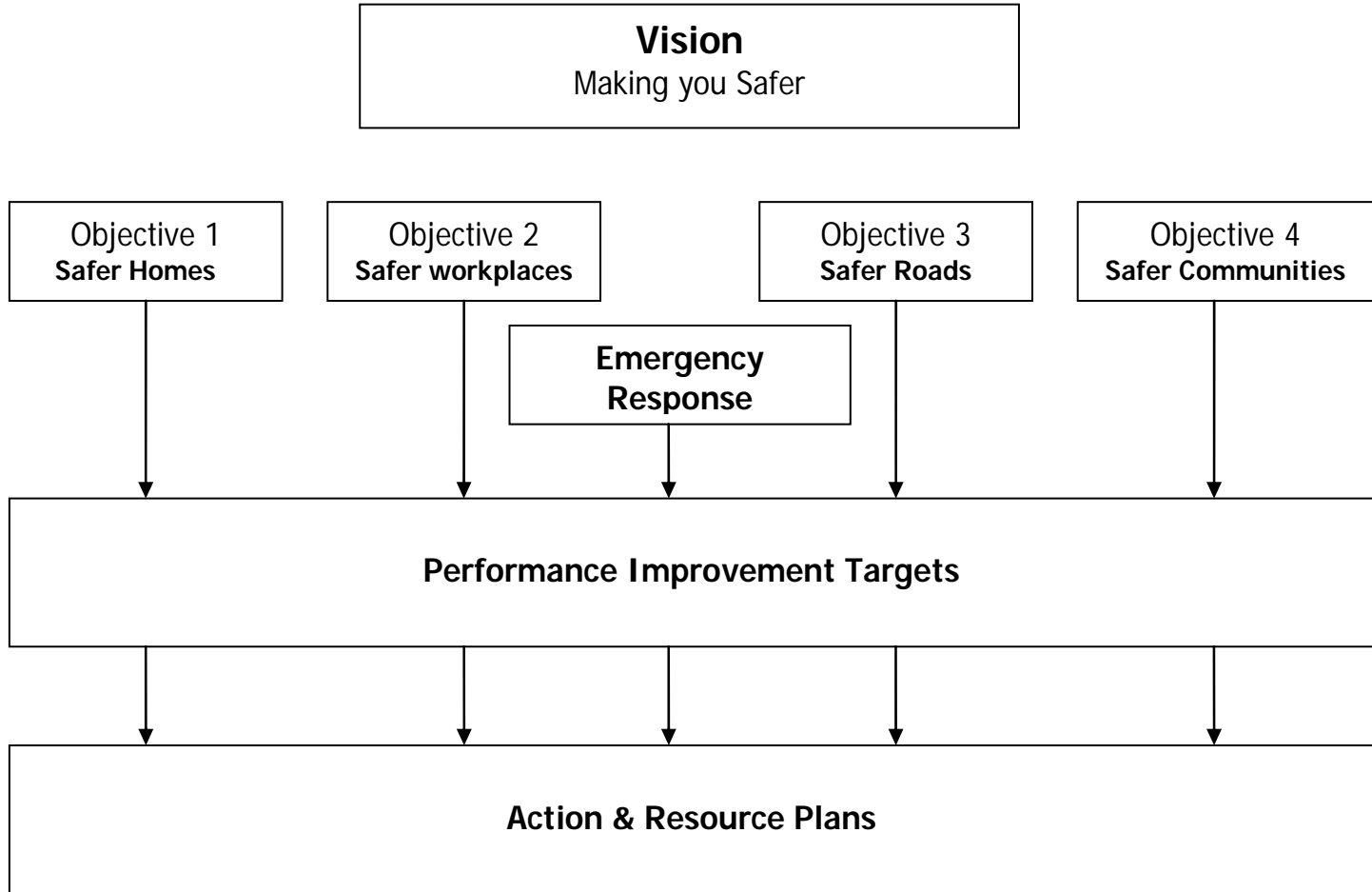


- Our Vision and Objectives
- Our Organisation
- Understanding Community Risks
- Pressures and Realities
- Proposed Objectives
- Potential Prevention Schemes
- Justifying the Costs
- IRMP Consultation

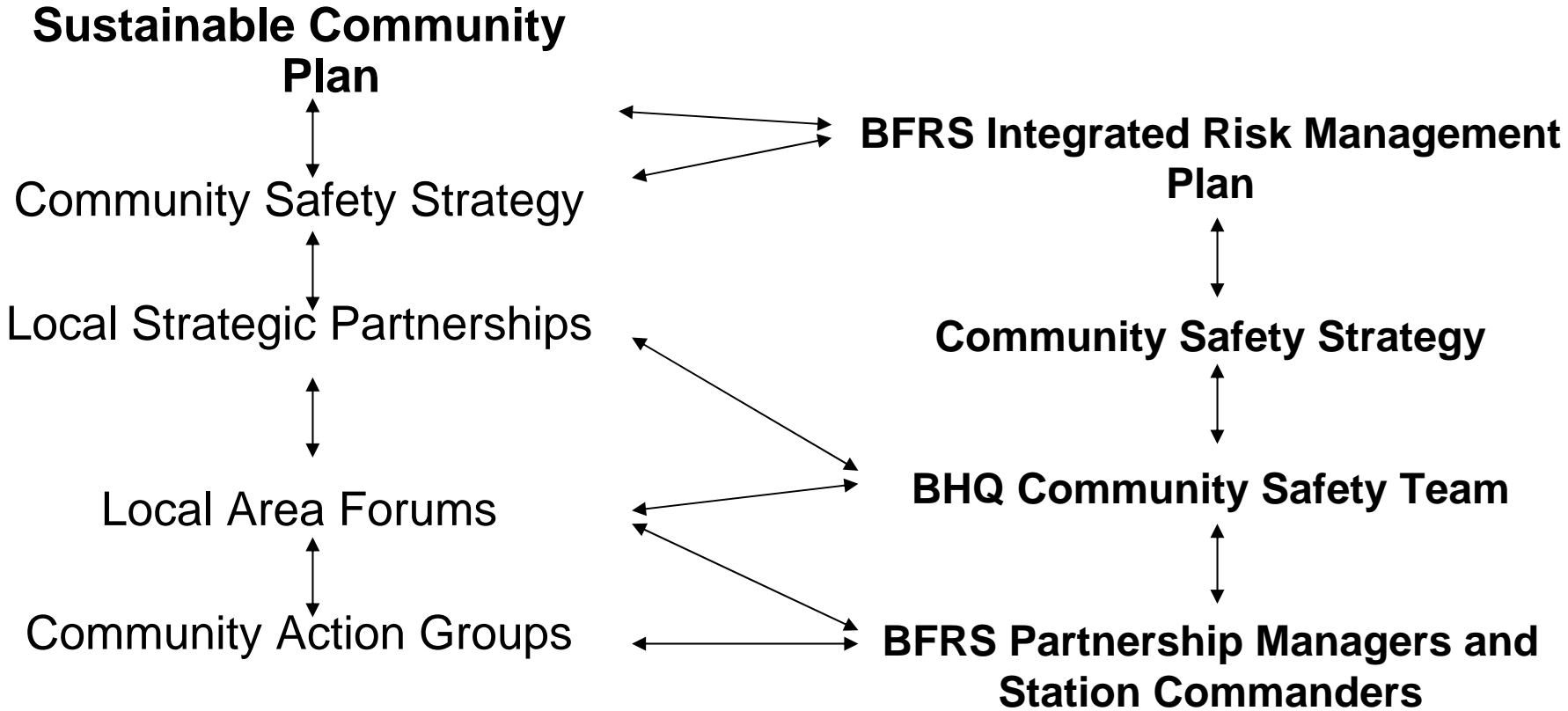
# BFRS Vision



Buckinghamshire & Milton Keynes Fire Authority  
**MAKING YOU SAFER**  
PREVENTING PROTECTING RESPONDING  
[WWW.BUCKSFIRE.GOV.UK](http://WWW.BUCKSFIRE.GOV.UK)



# BFRS Organisation

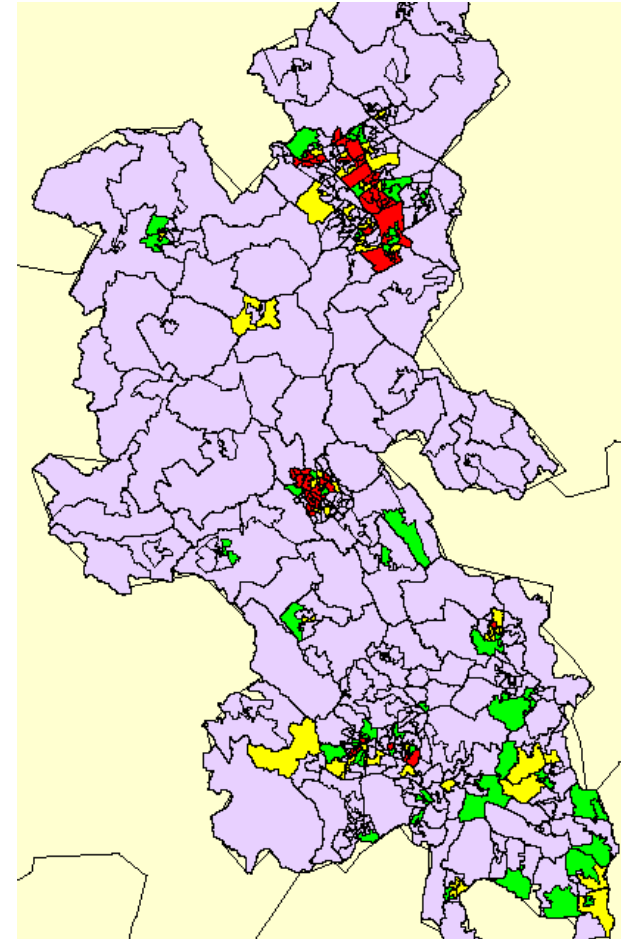


# Understanding Community Risks



Buckinghamshire & Milton Keynes Fire Authority  
**MAKING YOU SAFER**  
PREVENTING PROTECTING RESPONDING  
[WWW.BUCKSFIRE.GOV.UK](http://WWW.BUCKSFIRE.GOV.UK)

- **Computer Models**
  - FSEC, VLI, Phoenix
- **Our local Knowledge**
  - SSRA
- **Regional Risks**
  - Regional Resilience Forum
- **National Trends & Analysis**
  - Reports and analysis
- **Your Local knowledge and information**



# Pressures & Realities



Buckinghamshire & Milton Keynes Fire Authority

**MAKING YOU SAFER**

PREVENTING PROTECTING RESPONDING

[WWW.BUCKSFIRE.GOV.UK](http://WWW.BUCKSFIRE.GOV.UK)

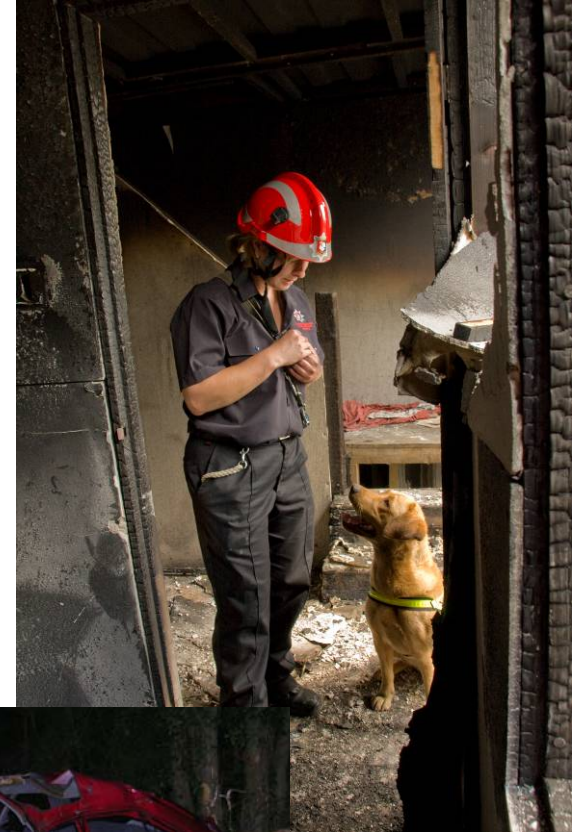
- We need to increase community safety capacity & effectiveness:
  - Expected growth in vulnerable groups
- High dependency on Community Safety activity to further reduce risk:
  - Especially for high risk groups in rural areas beyond more than 10 minutes from a fire station
- Rural risk:
  - Most of our capacity is in urban areas
  - Many rural areas served by retained firefighters
  - Some of our retained stations are in areas where it is becoming increasingly difficult to sustain required crewing levels

# Proposed Objectives



Buckinghamshire & Milton Keynes Fire Authority  
**MAKING YOU SAFER**  
PREVENTING PROTECTING RESPONDING  
[WWW.BUCKSFIRE.GOV.UK](http://WWW.BUCKSFIRE.GOV.UK)

- Driving down numbers of primary fires:
  - Accidental Dwelling Fires
  - Non Domestic Building Fires
  - Arson
- Reducing RTC deaths and injuries
- Targeting and reaching the most vulnerable
- Matching aspirations with capabilities



# Potential Prevention Schemes



Buckinghamshire & Milton Keynes Fire Authority

**MAKING YOU SAFER**

PREVENTING PROTECTING RESPONDING

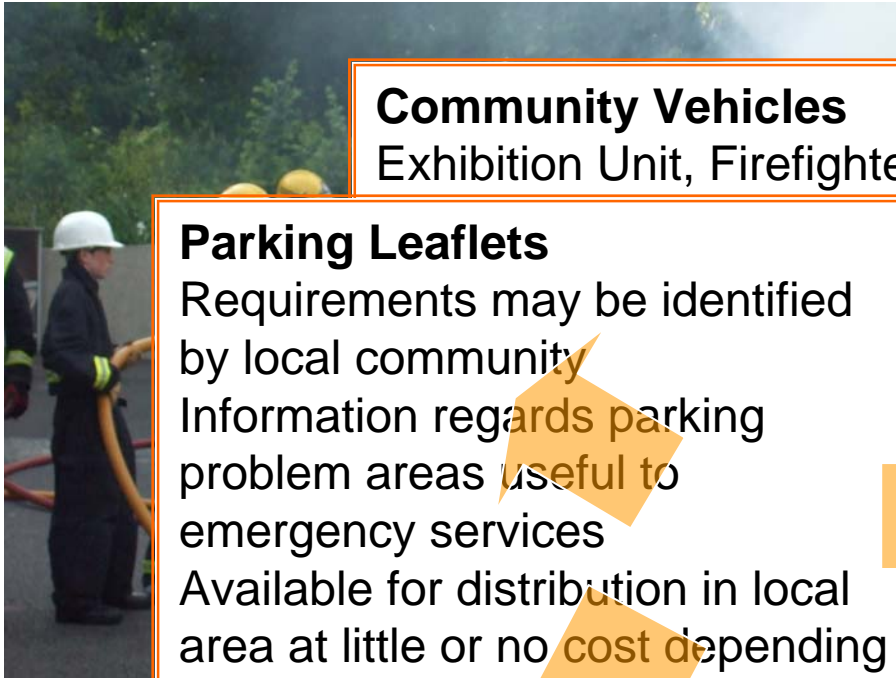
[WWW.BUCKSFIRE.GOV.UK](http://WWW.BUCKSFIRE.GOV.UK)

- Home Safety Check Scheme
- Anti-Social Parking Schemes
- Schools Safety Programme
- Biker Drop in Scheme
- Arson Audits
- Environmental Clear Up Initiatives
- Promotion of Sprinkler Systems
- Fire Setters Scheme
- Youth Diversion Schemes
  - Introduction to Emergency Services Course

**Will the value justify the cost?**



# Will the value justify the cost?



## Community Vehicles

Exhibition Unit, Firefighter experience and

## Parking Leaflets

Requirements may be identified by local community

Information regards parking problem areas useful to emergency services

Available for distribution in local area at little or no cost depending upon quantity required

for a variety of local

use and availability and subject to high

## Services

high

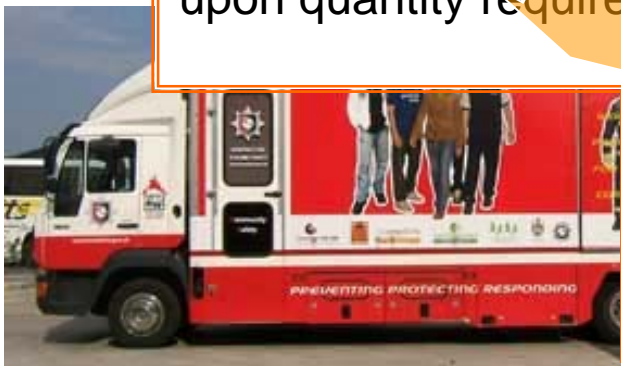
(Cs),

based morale,

improved understanding of what young people want in local area and how to improve, work of young people – improved safety improved reporting of ASB by young people

Participants increased understanding of life choices and job opportunities

Consideration being given to running further courses in area  
Ongoing work with individuals and course evaluation planned



# Integrated Risk Management Plan



Buckinghamshire & Milton Keynes Fire Authority  
**MAKING YOU SAFER**  
PREVENTING PROTECTING RESPONDING  
[WWW.BUCKSFIRE.GOV.UK](http://WWW.BUCKSFIRE.GOV.UK)

## IRMP- Our Strategic Plan

- Consultation
- 26<sup>th</sup> September  
- 12 Weeks -  
to 19<sup>th</sup> December
- Details to stakeholders and on website:  
[www.bucksfire.gov.uk](http://www.bucksfire.gov.uk)





- What are your local priorities?
- Do you need additional local information?
  - Risks
  - Initiatives
  - Key tasks
- Can we make improvements together?
- Delivering effective services
- Is BFRS on your agenda?

# Key BFRS contacts



Headquarters: **Jeremy Williams**  
01296 744400 [jwilliams@bucksfire.gov.uk](mailto:jwilliams@bucksfire.gov.uk)

Aylesbury Vale: **Claire Childs**  
01296 744475 [cchilds@bucksfire.gov.uk](mailto:cchilds@bucksfire.gov.uk)

South Bucks and Chiltern: **Claire Young**  
01494 675224 [cyoung@bucksfire.gov.uk](mailto:cyoung@bucksfire.gov.uk)

Wycombe: **Jo Oliver**  
01494 898420 [joliver@bucksfire.gov.uk](mailto:joliver@bucksfire.gov.uk)



Buckinghamshire & Milton Keynes Fire Authority

**MAKING YOU SAFER**

PREVENTING PROTECTING RESPONDING

[WWW.BUCKSFIRE.GOV.UK](http://WWW.BUCKSFIRE.GOV.UK)

Making you safer!

[www.bucksfire.gov.uk](http://www.bucksfire.gov.uk)