



# COVID-19 in Buckinghamshire

## Data as of 4 November 2020

Produced by Public Health

for the Buckingham Community Board



# Buckinghamshire Cases of COVID-19 – 25 to 31 October

COVID-19 Cases in Buckinghamshire	Number of cases across pandemic (up to 31 <sup>st</sup> October)	Rate of cases per 100,000 population across pandemic (up to 31 <sup>st</sup> October)	Number of cases in last 7 days (25 to 31 Oct)	7 day rate per 100,000 population (25 to 31 Oct)
Buckinghamshire	4758	874.7	673	123.7
Aylesbury Vale	1729	850.8	236	116.1
Chiltern	854	889.2	91	94.7
South Bucks	793	1125.8	120	170.4
Wycombe	1382	793.0	226	129.7
South East Region	79,884	868	10625	115.7
England	903,500	1603	129,273	229.7

## R Values

As of 6 November

1.1-1.3

ENGLAND

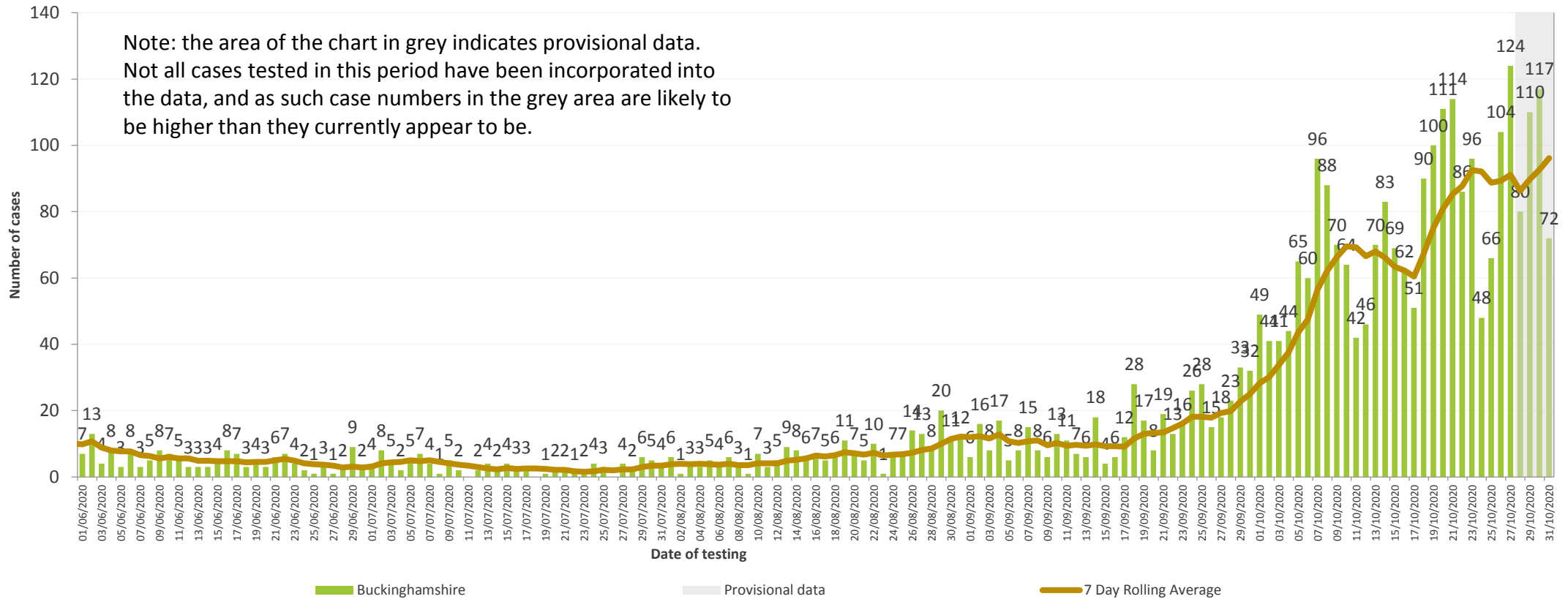
1.2-1.4

SOUTH EAST

Data known as of 4<sup>th</sup> November 2020

# Buckinghamshire Cases of COVID-19 – 25 to 31 October

Daily COVID-19 New Cases in Buckinghamshire, by date of testing



Source: PHE

**Between 25 to 31 October: 673 cases** recorded for Buckinghamshire residents

A rate of **123.7 per 100,000 population.**

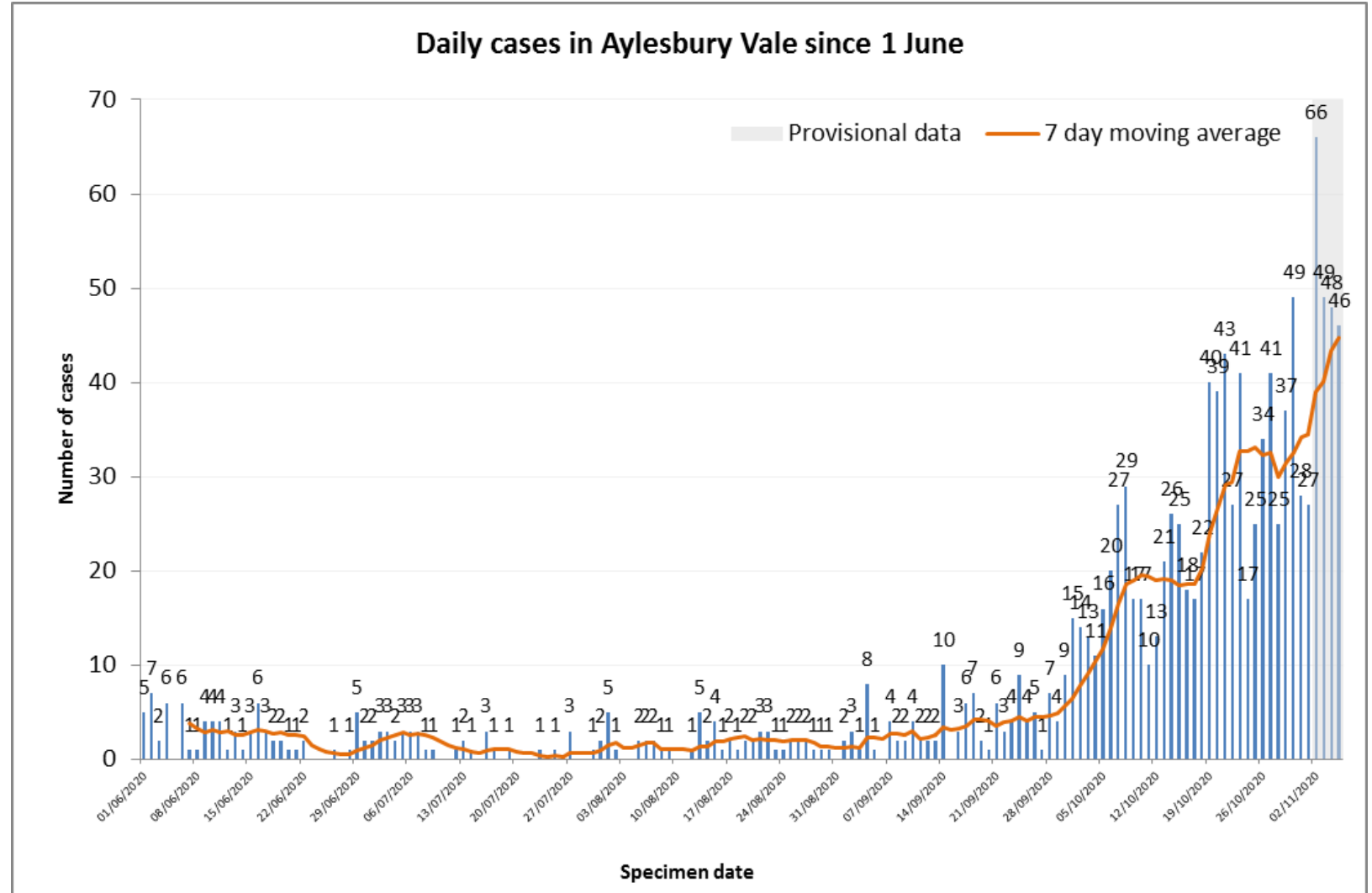
*This is subject to change as more cases are added for this time period.*

# Lower Tier LA Cases of COVID-19 – 25 to 31 October

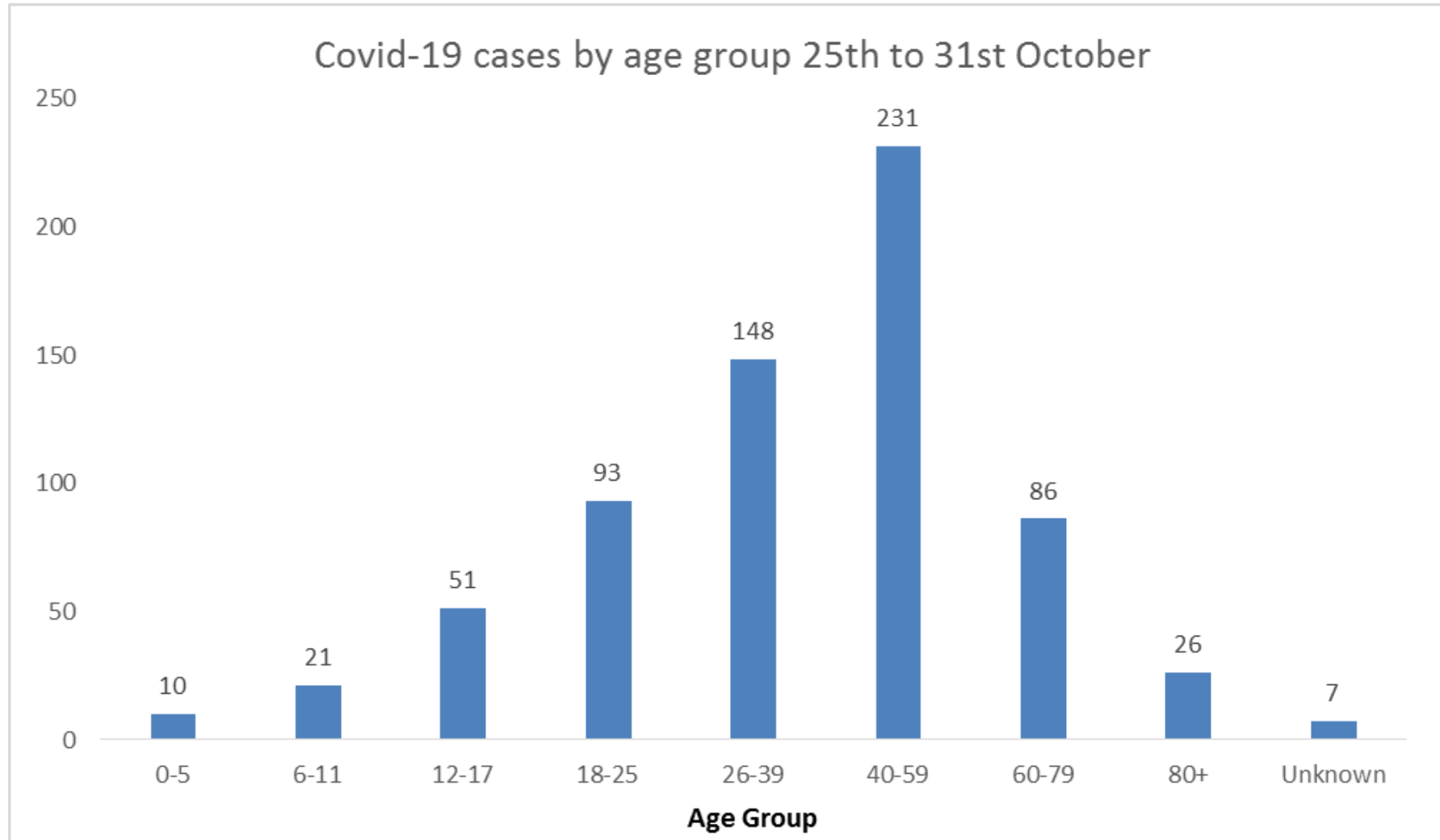
Between 25 to 31 October:

**236 cases** recorded for  
Aylesbury Vale residents  
A rate of **116.1 per 100,000**  
**population.**

*This is subject to change as more  
cases are added for this time period.*

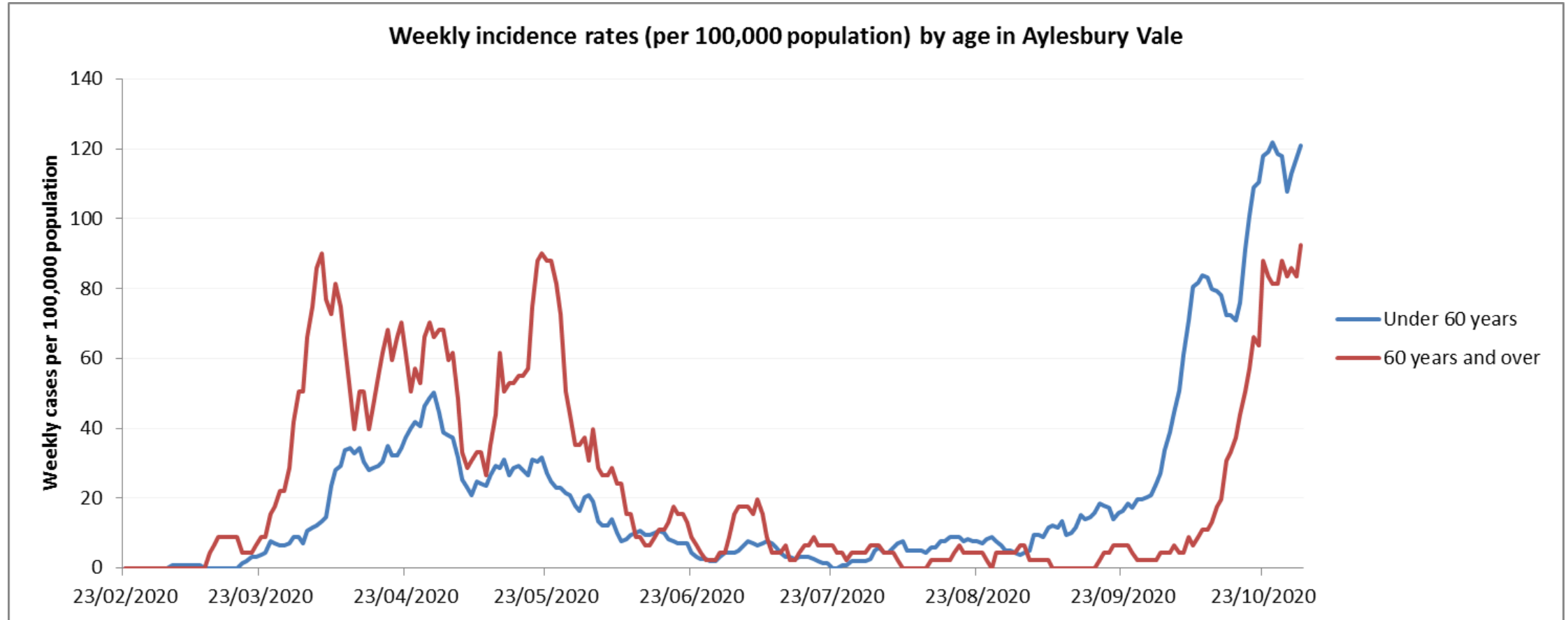


# Age of Buckinghamshire COVID-19 Cases – 25 to 31 October



Data as known on 4-11-20

# Weekly Rate of COVID-19 Cases per 100,000 by age

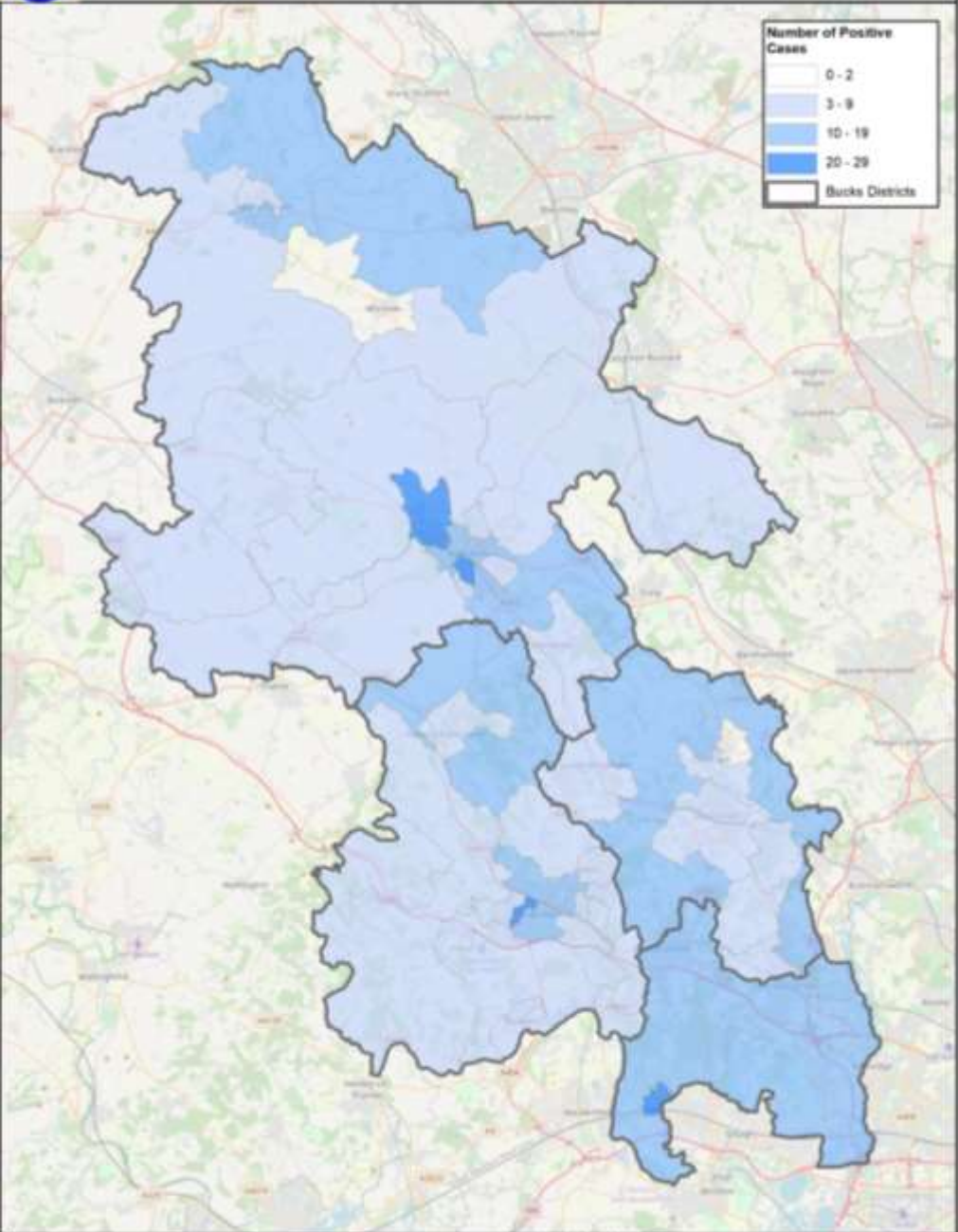


(Source: PHE)

rates will fluctuate more with smaller populations in the districts



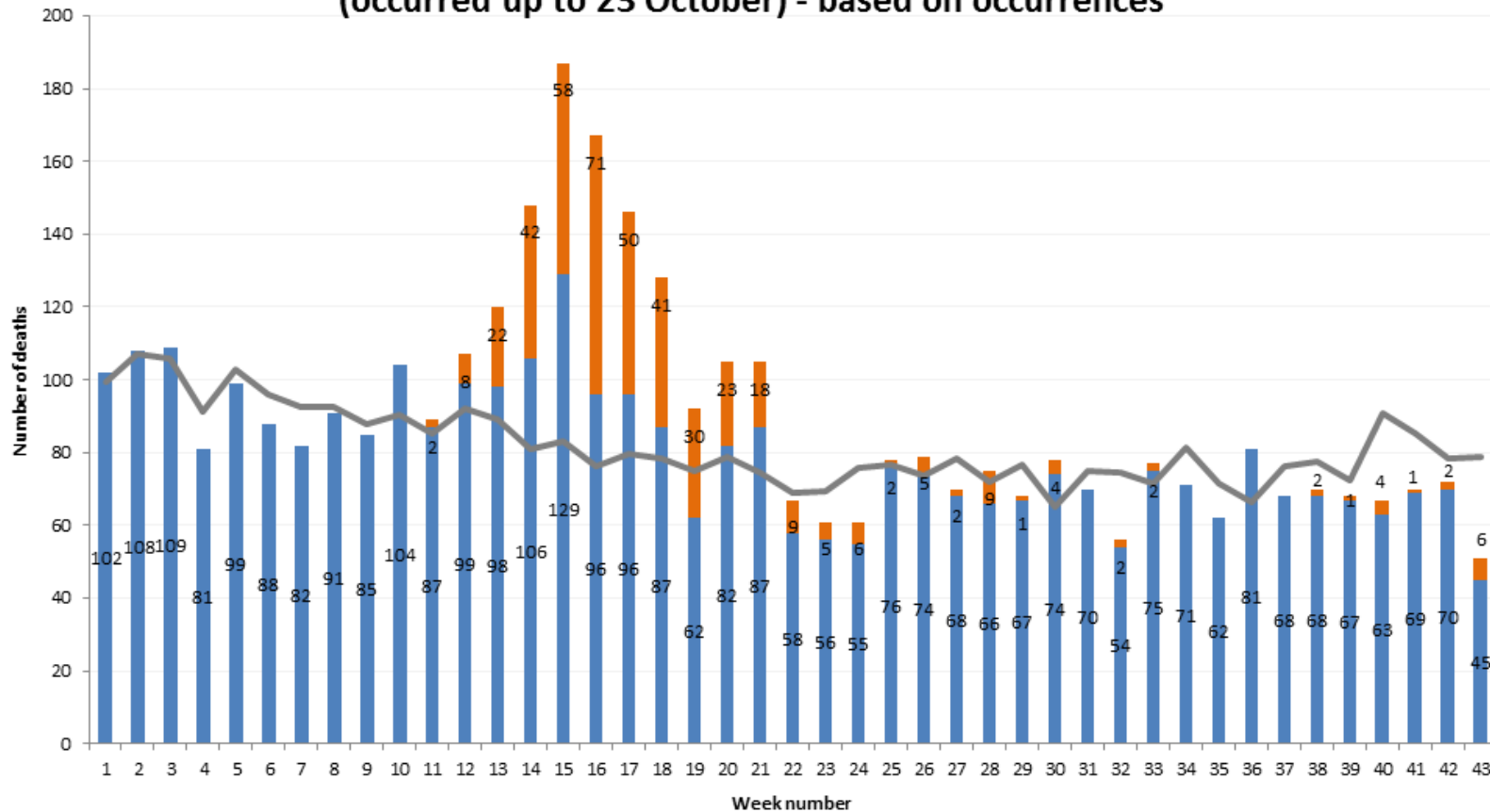
**COVID-19 Cases  
25 to 31 October**



This map is reproduced from Ordnance Survey data with the permission of Ordnance Survey on behalf of the Controller of Her Majesty's Stationery Office. Copyright © Crown Copyright. Ordnance Survey. All rights reserved. Buckinghamshire Council. Produced by Public Health Intelligence. Buckinghamshire Council. 04/11/2020

# COVID-19 Deaths - Buckinghamshire Residents

Number of deaths (COVID-19 and non-COVID) in 2020 up to week 43 (occurred up to 23 October) - based on occurrences



Source: ONS and Bucks PHI

■ Non-COVID deaths    
 ■ COVID deaths    
 — 2015-19 average - all deaths

In week to 23 October, there were **6 deaths related to COVID-19** for a Buckinghamshire resident, according to the Office for National Statistics.

**Highest number of COVID-19 related deaths for 15 weeks.**