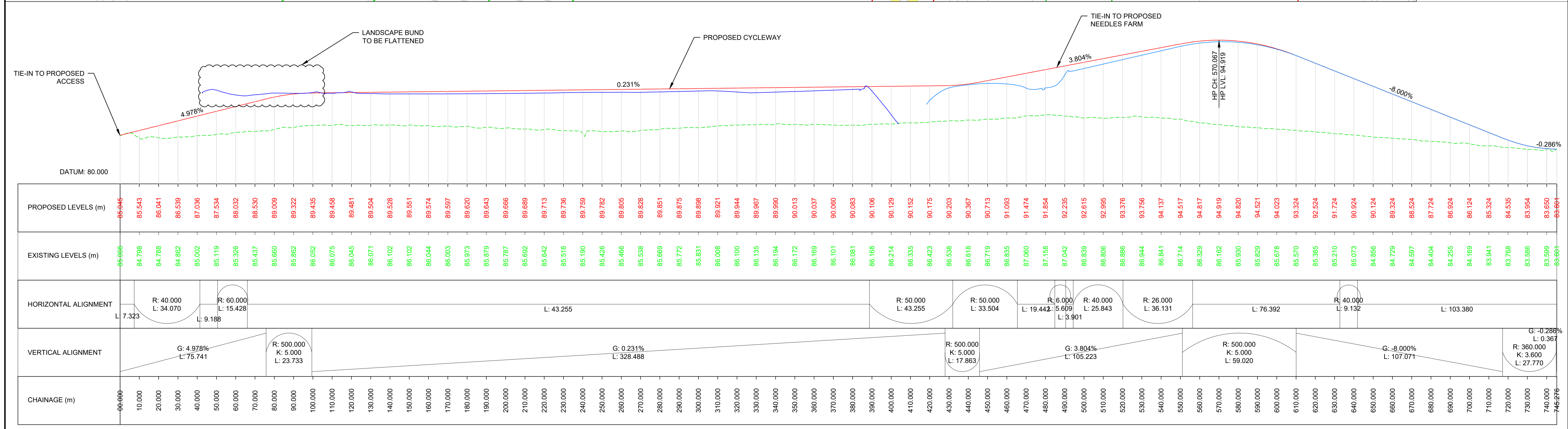


PLAN:

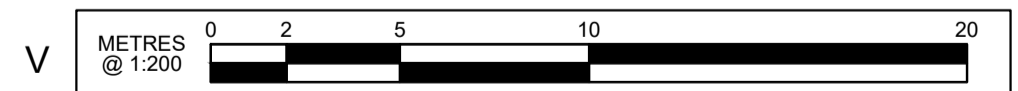
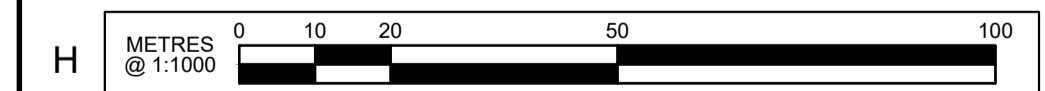
- LOD BOUNDARY
- LLAU BOUNDARY
- ROAD CENTER LINE
- EDGE OF CYCLE WAY
- PROPOSED CYCLE ROUTE
- PROPOSED HIGHWAYS EARTHWORKS
- PROPOSED HIGHWAYS EARTHWORK LINES
- BOUNDARY FENCE
- SECURITY FENCE
- NOISE BARRIER

PROFILE:

- EXISTING LEVEL
- PROPOSED LEVEL
- LANDSCAPE BUND
- PROPOSED NEEDLES FARM ALIGNMENT



NEEDLES FARM CYCLE WAY
LONGITUDINAL SECTION
SCALE 1:1000 H, 1:200 V



P01	Issue for information to HS2	MA	CG	DW	HS2 accepts no responsibility for any circumstances which arise from the reproduction of this document after alteration, amendment or abbreviation or if it is issued in part or issued incompletely in any way.
		21/04/20	21/04/20	21/04/20	© Crown Copyright and database right 2018. All rights reserved. Ordnance Survey Licence number 100049190
					© Crown Copyright material is reproduced with the permission of Land Registry under delegated authority from the Controller of HMSO.
					This material was last updated on 2018 and may not be copied, distributed, sold or published without the formal permission of Land Registry. Only an official copy of a title plan or register obtained from the Land Registry may be used for legal or other official purposes.
					Drawing produced in HS2 SnakeGrid (HS2P1+14) coordinate system
Rev	Description	Drawn	Checked	Approved	Scale with caution as distortion can occur.

Legends/Notes:

NOTES:

- ALL DIMENSIONS ARE IN METRES UNLESS OTHERWISE STATED.
- THE EARTHWORKS SLOPES ARE PROPOSED TO BE 1:3 UNLESS OTHERWISE STATED.
- THE BACKGROUND INFORMATION SHOWN ON DRAWINGS ABOVE (E.G. HS2 EARTHWORKS/DRAINAGE PONDS AND LANDSCAPE BUNDS, ETC) MAY NOT REPRESENT CURRENT DESIGN. REFER TO RESPECTIVE DESIGNS AND DRAWINGS SEPARATELY.
- DRAINAGE CULVERTS AND WATERCOURSE CROSSINGS ARE NOT SHOWN ON DRAWINGS ABOVE. REFER TO RELEVANT HIGHWAY/LANDSCAPE AND TRACK DRAINAGE DRAWINGS SEPARATELY.

HS2

Registered in England
Registration No. 06791686
Registered office:
2 Snow Hill, Queensway,
Birmingham, B4 6GA

Creator/Originator
CEK

Zone	Aylesbury South to Quainton	Project/Contract	1MC06
Design Stage	Feasibility Study Design	Discipline/Function	Drainage & Highways
Drawing Title	Needles Farm Cycle Route Plan and Profile Sheet 1	Drawn	M. Atieh
		Checked	C. C. Tsoulou
		Approved	D. Wynton
		Date	21/04/20
		Scale	AS SHOWN
		Size	A1
Design Status	S3	Drawing No.	1MC06-CL-1W-DGA-CS04_CL20-000290
Suitability	Suitable for Review & Comment	Rev.	P01

DRAFT