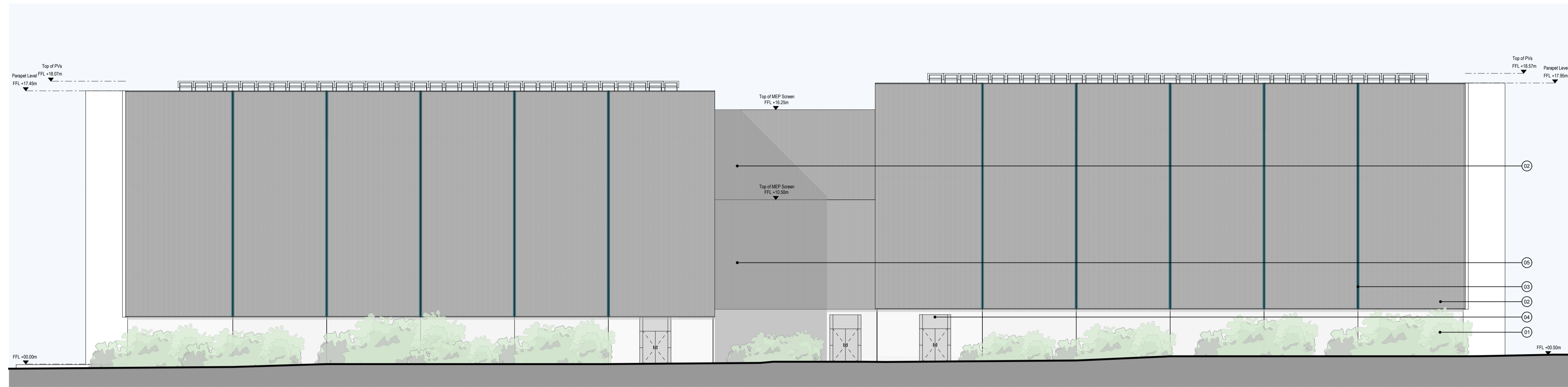
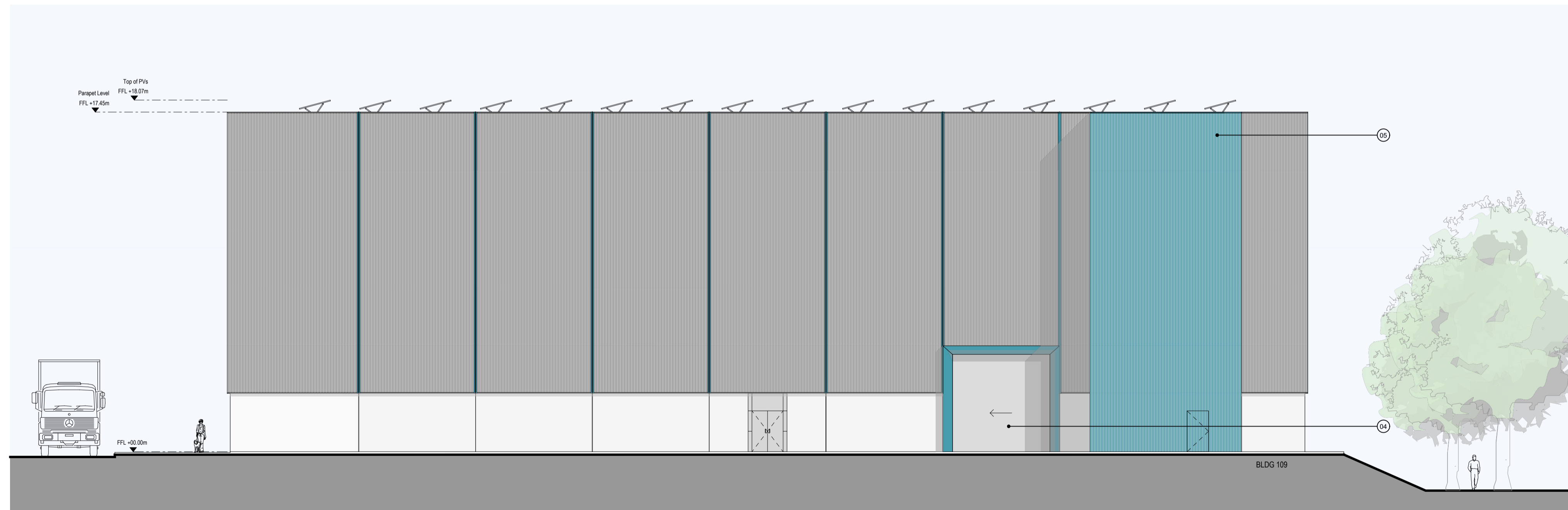


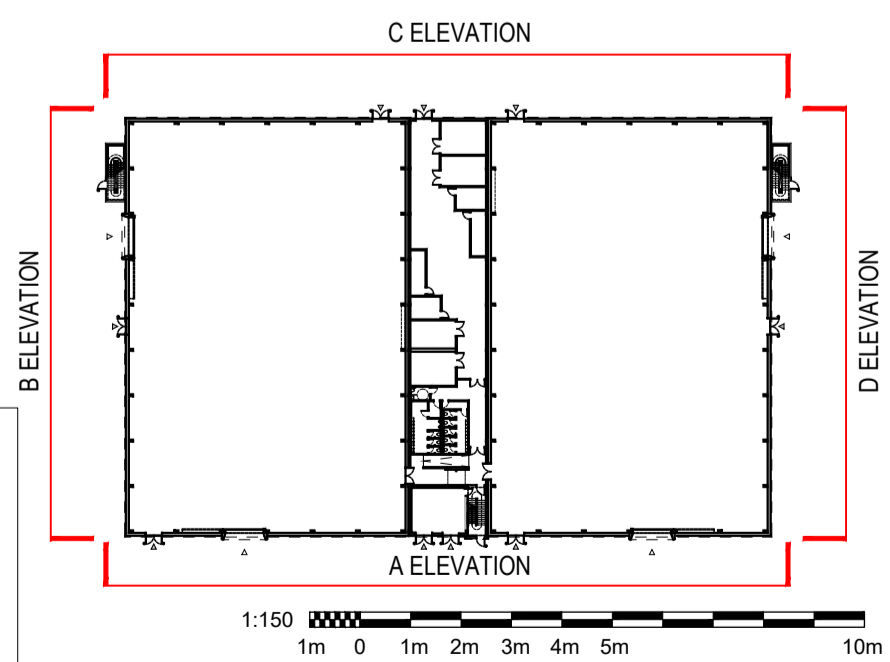
Sound Stage General Notes
 Coloured elements act as a wayfinding device and vary by plot location.
 Access and Escape Door positions vary by location as per masterplan drawings 0200.0201.0202.
 Additional MEP screens as indicated vary by location as per masterplan drawings 0200.0201.0202.
 Fall restraint not shown-to be coordinated during design development.
 Landscape is indicative, refer to Landscape Architect's drawings.
 PVs are orientated to face South-West as per masterplan drawing 0299.



1 Elevation C
 1:150



2 Elevation D
 1:150



| Material Key | | | |
|--------------------------------------|---|---|-------------------------------|
| 01. Fair faced concrete | 07. Glazed Curtain walling, glazed doors | 13. Timber brise soleil | 19. Green roof |
| 02. Metal profiled cladding | 08. Glazed and metal clerestory windows | 14. Metal brise soleil | 20. Metal weather louvres |
| 03. Metal profile flashing | 09. Glazed Curtain walling | 15. Metal louvre panels | 21. Roof Lights |
| 04. Metal doors | 10. Glazed and metal insulated Curtain walling | 16. Timber cladding to soffit and reveals | 22. Glass vertical fins |
| 05. Perforated metal profiled screen | 11. Glazed Curtain walling with integrated mesh shading | 17. Metal standing seam cladding | 23. Glass balustrade |
| 06. Translucent cladding | 12. Glazed and timber insulated Curtain walling with timber shading | 18. Tiled roof | 24. Perforated metal cladding |

Notes

- Drawings have been prepared for Planning Application only
- Do Not Scale
- All drawings to be read in conjunction with the Engineers' and Landscape Architect's drawings

Issue Status

PLANNING APPLICATION

Client
 Dido Property Limited

WilkinsonEyre
 Wilkinson Eyre Architects
 33 Bowling Green Lane, London
 EC1R 0BJ, United Kingdom
 +44 (0) 20 7608 7800 T
 +44 (0) 20 7608 7801 F
 www.wilkinsoneye.com

Project
 Marlow Film Studios
 Drawing Title
 Bldgs 108 & 109
 Sound Stage - Type AA - GA Elevations
 Scale at A1
 1:150
 Drawing and CAD File Number
 01841-WEA-SS-ZZ-DR-A-2106
 Rev
 PL2

| Rev | Date | Description | By | Checked |
|-----|------------|-----------------------|----|---------|
| PL2 | 10/06/2022 | Validation Amendments | PH | EK |
| PL1 | 20/05/2022 | Planning Application | PH | EK |