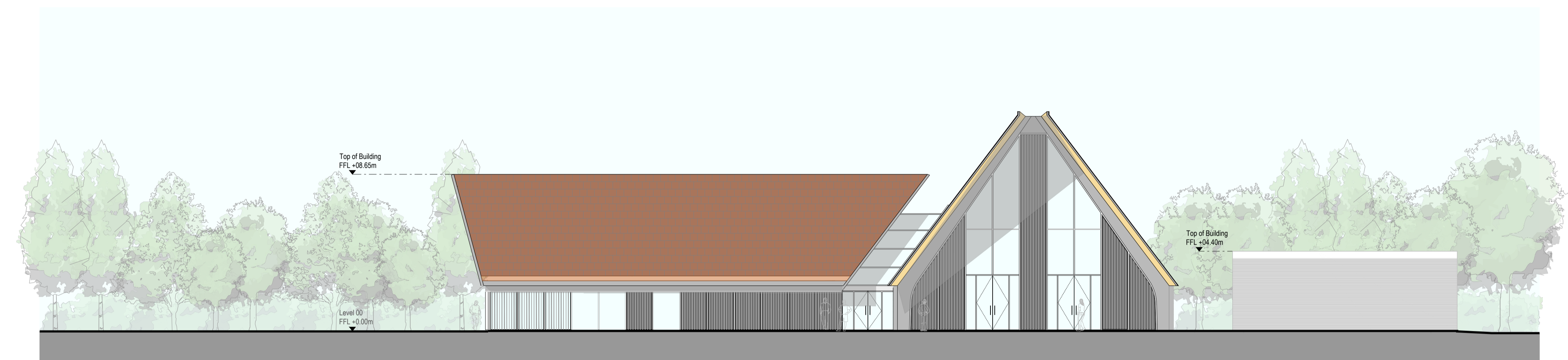
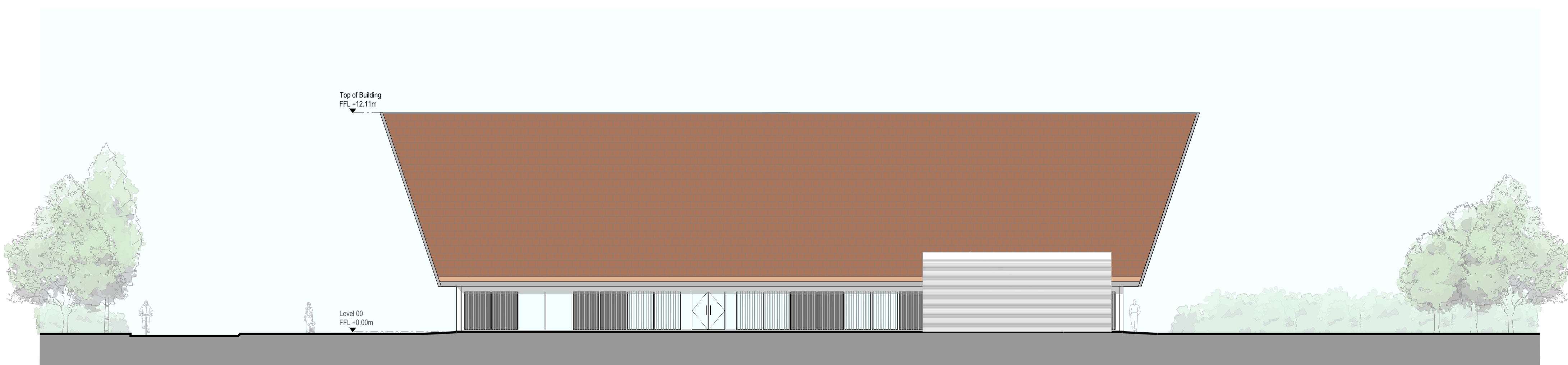




1 South Elevation
1:150

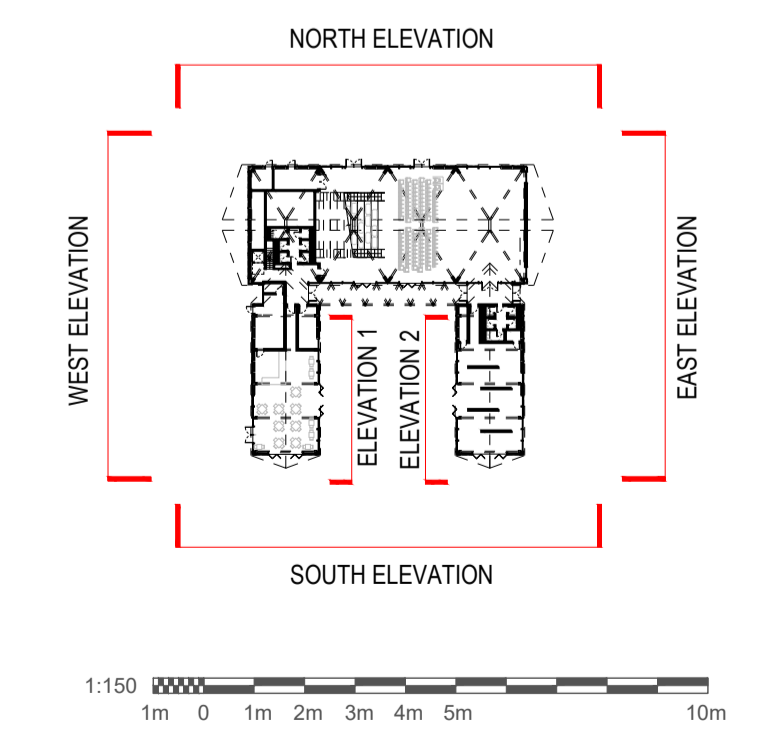


2 East Elevation
1:150



3 North Elevation
1:150

Material Key			
01. Fair faced concrete	07. Glazed Curtain walling, glazed doors	13. Timber brise soleil	19. Green roof
02. Metal profiled cladding	08. Glazed and metal clerestory windows	14. Metal brise soleil	20. Metal weather louvres
03. Metal profile flashing	09. Glazed Curtain walling	15. Metal louvre panels	21. Roof Lights
04. Metal doors	10. Glazed and metal insulated Curtain walling	16. Timber cladding to soffit and reveals	22. Glass vertical fins
05. Perforated metal profiled screen	11. Glazed Curtain walling with integrated mesh shading	17. Metal standing seam cladding	23. Glass balustrade
06. Translucent cladding	12. Glazed and timber insulated Curtain walling with timber shading	18. Tiled roof	24. Perforated metal cladding



Notes

- Drawings have been prepared for Planning Application only
- Do Not Scale
- All drawings to be read in conjunction with the Engineers' and Landscape Architects' drawings

Issue Status

PLANNING APPLICATION

Client

Dido Property Limited

WilkinsonEyre

Wilkinson Eyre Architects
33 Bowling Green Lane, London
EC1R 0BJ, United Kingdom

+44 (0) 20 7608 7900 T
+44 (0) 20 7608 7901 F
www.wilkinsonseyre.com

Project
Marlow Film Studios

Drawing Title
Bldg 401
Culture and Skills Academy - Elevations 1/2

Scale at A1
1:150

Drawing and CAD File Number
01841-WEA-CA-ZZ-DR-A-2800

Rev
PL2

Rev	Date	Description	By	Checked
PL2	10/06/2022	Validation Amendments	PH	EK
PL1	20/05/2022	Planning Application	LH	EK