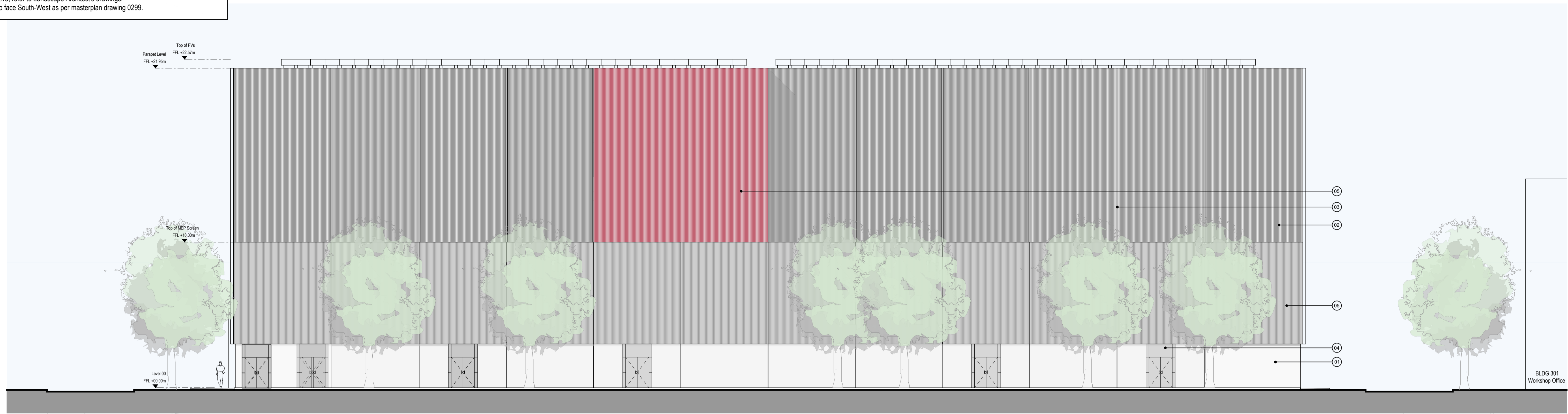
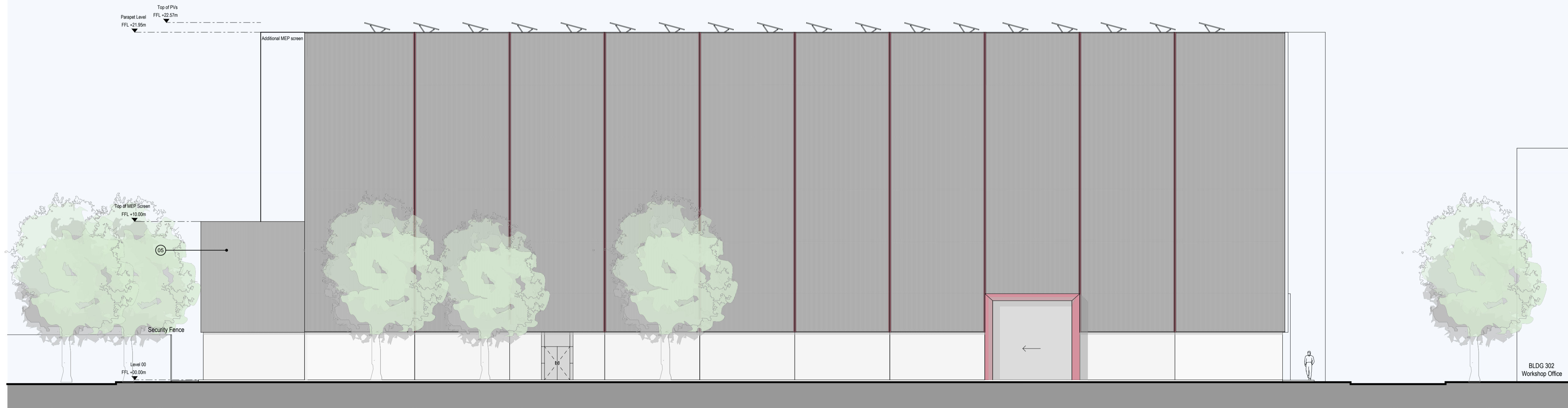


Sound Stage General Notes
 Coloured elements act as a wayfinding device and vary by plot location.
 Access and Escape Door positions vary by location as per masterplan drawings 0200.0201.0202.
 Additional MEP screens as indicated vary by location as per masterplan drawings 0200.0201.0202.
 Fall restraint not shown-to be coordinated during design development.
 Landscape is indicative, refer to Landscape Architect's drawings.
 PVs are orientated to face South-West as per masterplan drawing 0209.

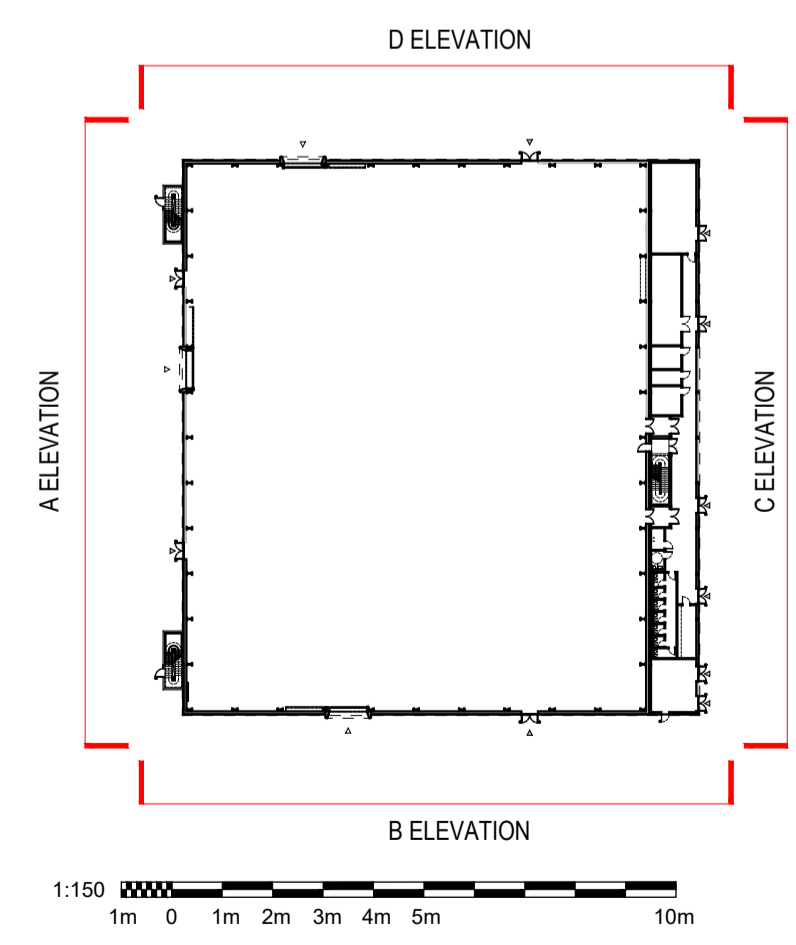


1
C Elevation
1:150



2
D Elevation
1:150

Material Key			
01. Fair faced concrete	07. Glazed Curtain walling, glazed doors	13. Timber brise soleil	19. Green roof
02. Metal profiled cladding	08. Glazed and metal clerestory windows	14. Metal brise soleil	20. Metal weather louvres
03. Metal profile flashing	09. Glazed Curtain walling	15. Metal louvre panels	21. Roof Lights
04. Metal doors	10. Glazed and metal insulated Curtain walling	16. Timber cladding to soffit and reveals	22. Glass vertical fins
05. Perforated metal profiled screen	11. Glazed Curtain walling with integrated mesh shading	17. Metal standing seam cladding	23. Glass balustrade
06. Translucent cladding	12. Glazed and timber insulated Curtain walling with timber shading	18. Tiled roof	24. Perforated metal cladding



- Notes
- Drawings have been prepared for Planning Application only
 - Do Not Scale
 - All drawings to be read in conjunction with the Engineers' and Landscape Architect's drawings

Issue Status

PLANNING APPLICATION

Client

Dido Property Limited

WilkinsonEyre

Wilkinson Eyre Architects
 33 Bowling Green Lane, London
 EC1R 0BJ, United Kingdom

+44 (0) 20 7608 7800 T
 +44 (0) 20 7608 7801 F
 www.wilkinsoneye.com

Project		
Marlow Film Studios		
Drawing Title		
Bldg 303		
Sound Stage - Type E - GA Elevations 2/2		
Scale at A1	Drawing and CAD File Number	Rev
1:150	01841-WEA-SS-ZZ-DR-A-2131	PL2

Rev	Date	Description	By	Checked
PL2	10/06/2022	Validation Amendments	PH	EK
PL1	20/05/2022	Planning Application	PH	EK