



Our Response to COVID

Dr Jane O'Grady

Director of Public Health, Early Help and Prevention

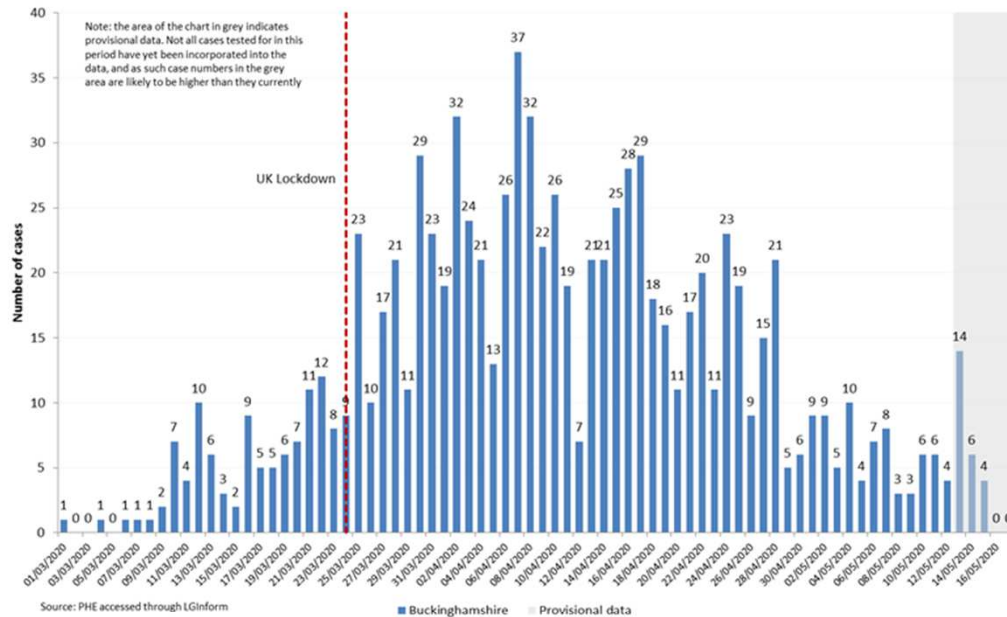
Councillor Gareth Williams

Cabinet Member

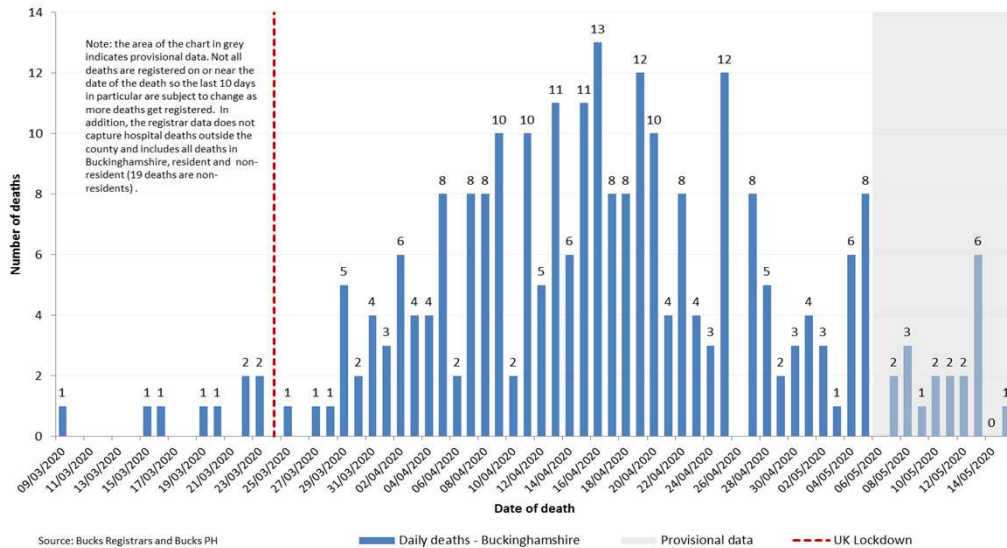


Epidemiology

Daily COVID-19 New Cases in Buckinghamshire, by date of testing



Daily COVID-19 Deaths in Buckinghamshire by Date of Death, registered up to 18th May, occurring up to 15th May.



As of 21 May 2020, there have been

- 250,908 cases in the UK
- 966 cases in Buckinghamshire
- 36,042 deaths in the UK
- 262 deaths in Buckinghamshire

The first Buckinghamshire COVID-19 case was recorded on 6 March and was linked to overseas travel.

The first death in a Buckinghamshire care home occurred on 12 March.

Our Response to COVID

- Monitoring the epidemic.
- Health protection management and advice.
- Mental Health response.
- Communications.
- Community response.
- Rapid Health Impact Assessment of COVID.

Monitoring the Epidemic & Impact

- Tracking and reporting on cases, care home outbreaks and deaths.
- Working with Thames Valley Modelling Cell to produce local models for COVID-19 planning.
- Development of health impact assessment to inform health and wellbeing recovery planning.
- Development of community health profiles to inform community board health and wellbeing profiles to inform local health and recovery plans.

Health Protection

- Providing public health advice to Council, ASC cell, School Leaders Group, Deaths group, Return to Work Group and system-wide colleagues during the pandemic.
- Contributing to PHE incident management meetings for COVID-19 outbreaks in high-risk settings.
- Contributing to care home infection control planning.
- Working with partners across the South East to prepare for the resumption of contact tracing.
- Supporting and advising the Buckinghamshire School Leads group and headteachers.

COVID 19 Public Mental Health Response

- Convened a multiagency partnership to deliver a co-ordinated response to the mental health impacts of Covid 19.
- Mapped provision of national and local mental health and bereavement support and identified gaps.
- Developed local signposting resources for bereavement, developed clear bereavement pathways, and is increasing bereavement counselling capacity.
- Developed resources for teachers, parents and children on mental health.
- Delivered messages to the public on coping with and improving mental health with signposting to services.
- Trained staff across different agencies and the Bucks Council workforce on workplace mental health.
- Promoted an online sleep programme, Sleepio, which has specialist support from Healthy Minds.
- Commissioned Bucks Mind to deliver new Suicide Bereavement Support Service, now launched.
- Worked with Healthy Minds on their website which is a local central repository for mental health resources.

COVID 19 Public Health Communications

- In partnership with the communications team, public health has developed robust and coherent campaigns for key health and wellbeing and signposting to services.
 - mental health
 - domestic violence
 - staying well during Ramadan
- Enhanced the Bucks council COVID-19 webpages to include general information about wider lifestyle issues.
- The webpages contain information to support people to make healthier choices and signposts to support services, who have adapted to telephone and digital provision.

COVID 19 Community Safety and Engagement

- Community Engagement has supported the temporary directory of coronavirus support groups, adding a number of faith groups and liaising with existing and new community groups to ensure their services are published on the website.
- The team has also continued to support and grow the Bucks Street Association, whose members have been actively involved in the community response, and welcomed a new Association in Aylesbury Old Town and 17 new members across the county.
- Communications plan implemented advising on support available during lockdown. Regular contact with Women's Aid and Police to monitor demand and issues. Planning for surge in demand from victims once lockdown lifts - although may take some months to fully emerge.
- Some evidence of targeting of (esp. young) people who are now spending more time online. Sharing of resources and communications to support people to stay safe and also support families to be more alert regarding online activity by their younger members.
- Some team members transferred to support community hubs and volunteering cells.

Recovery from COVID

- Conducting a rapid health impact assessment with NHS and wider partners of the impact of Covid 19 and the response e.g lockdown on the local population and services.
- Working with Communications and Communities team and partners on planning and implementation of listening exercise to gain community insights.
- Working with communities and partners on recovery plans as part of the place based approach to recovery in Buckinghamshire.